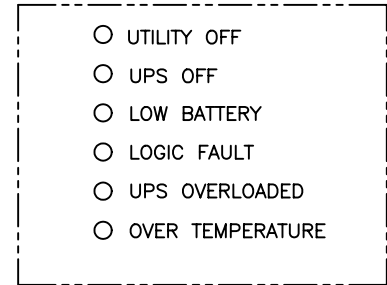
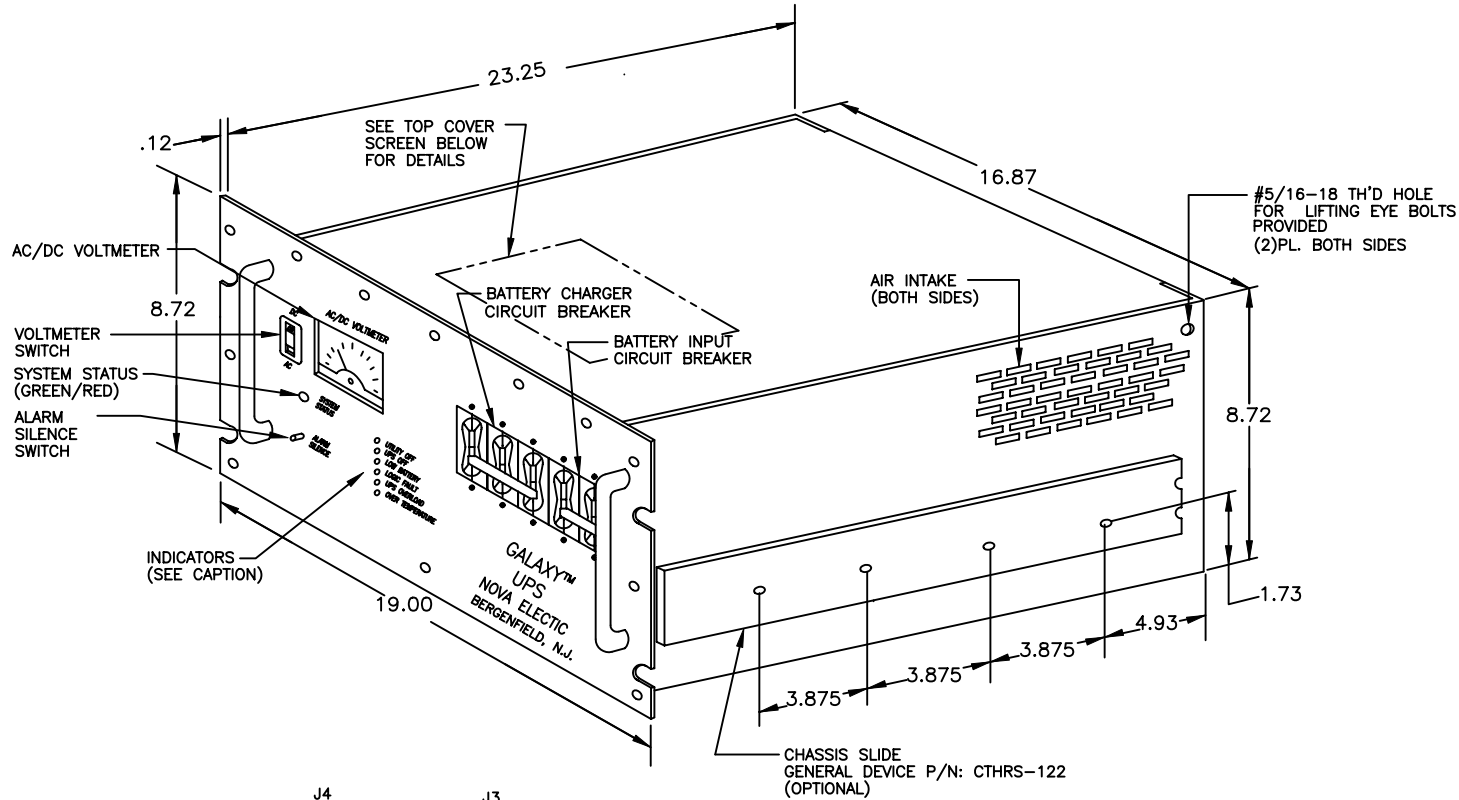
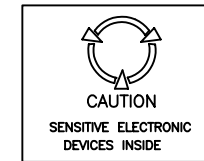


REVISIONS				
SYM	DESCRIPTION	BY	APP	DATE
-	RELEASE	XL	RD	3-1-99



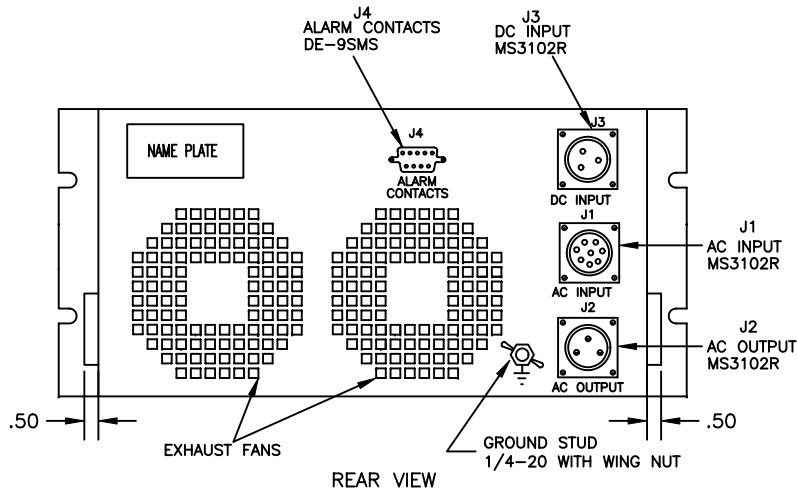
INDICATORS

- NOTES:
1. ALL DIMENSIONS ARE IN INCHES.
 2. APPROXIMATE WEIGHT: 200 LBS.
 3. EXTERIOR COLOR ANSI #61 GRAY
 4. RUGGEDIZED.



WARNING: FOR CONTINUED PROTECTION AGAINST RISK OF FIRE, REPLACE FUSES WITH SAME TYPE & RATING.
 WARNING: NO USER SERVICEABLE PARTS INSIDE, REFER SERVICING TO QUALIFIED PERSONEL ONLY.
 WARNING: USE ONLY BATTERY POWERED OR UNGROUNDED TEST EQUIPMENT WHEN SERVICING THIS EQUIPMENT.
 CAUTION: INTENDED FOR USE IN A PROTECTED ENVIRONMENT.

TOP COVER SCREEN



UNLESS OTHERWISE SPECIFIED DIMENSIONS ARE IN INCHES. TOLERANCES:		THIS DRAWING CONTAINS PROPRIETARY INFORMATION AND MAY NOT BE REPRODUCED WITHOUT THE PERMISSION OF NOVA ELECTRIC.	
FRAC.	DEC.	ANGLES	DATE
+/-1/64XX=+/-02	+/-2	XXX=+/-005DEG	3/1/99
MATERIAL:		CHECKED BY:	DATE
N/A		MY	3/1/99
FINISH:		APPROVED BY:	DATE
N/A		RD	3/1/99
NEXT ASS'Y	USED ON	TITLE:	
APPLICATION		OUTLINE DRAWING TYPICAL GALAXY 5KVA RACKMOUNT UPS	
		SIZE:	REV.
		C	-
		SCALE: NTS	CAGE: 29019 SHEET 1 OF 1

NOVA ELECTRIC
 A DIV. OF TECHNOLOGY DYNAMICS INC.
 100 SCHOOL STREET
 BERGENFIELD, N.J. 07621-2915

NOVA
 TITLE: OUTLINE DRAWING
 TYPICAL GALAXY
 5KVA RACKMOUNT UPS
 SIZE: C
 980758
 REV: -
 SCALE: NTS
 CAGE: 29019 SHEET 1 OF 1