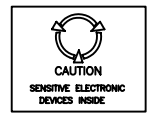
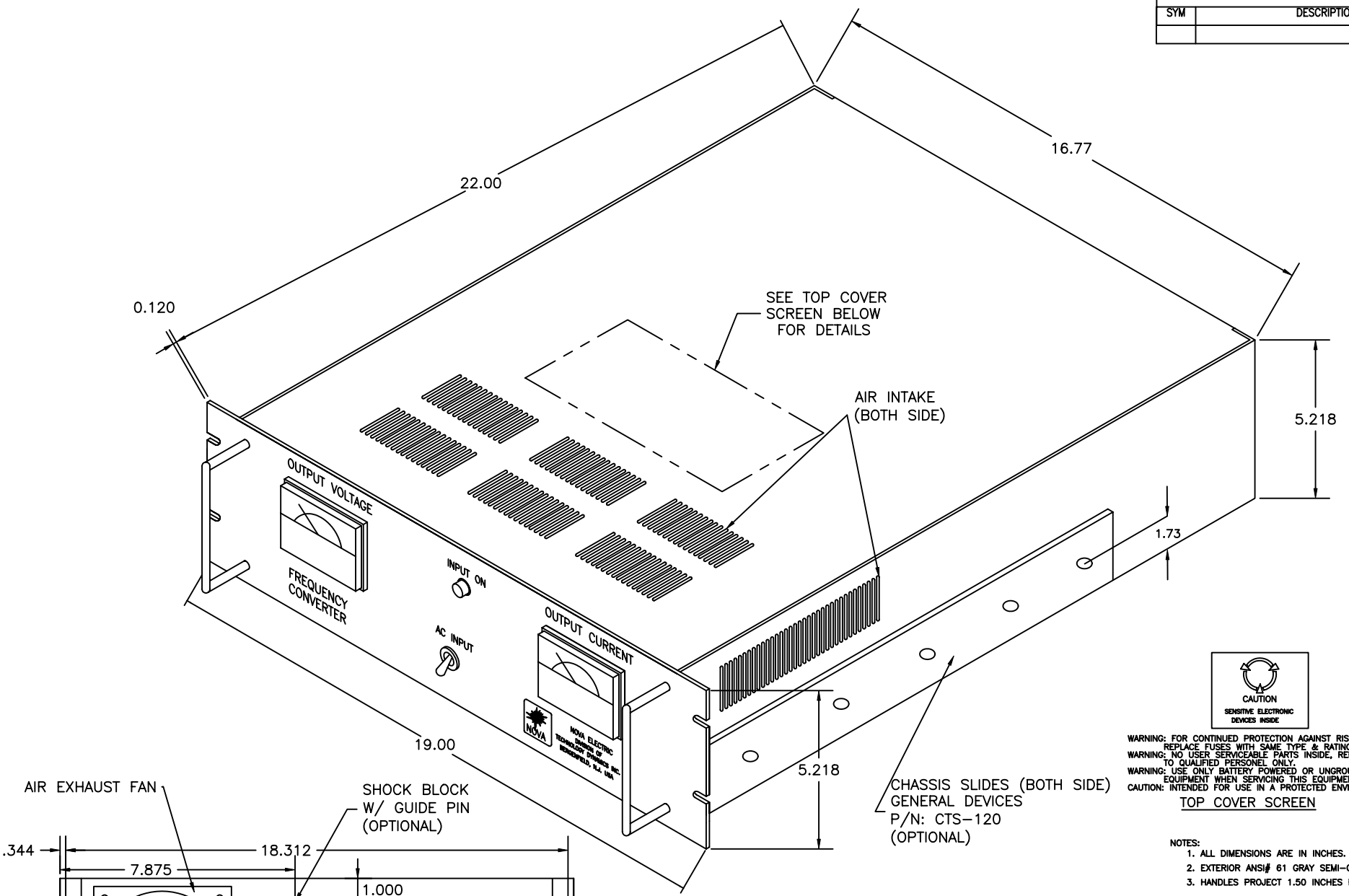


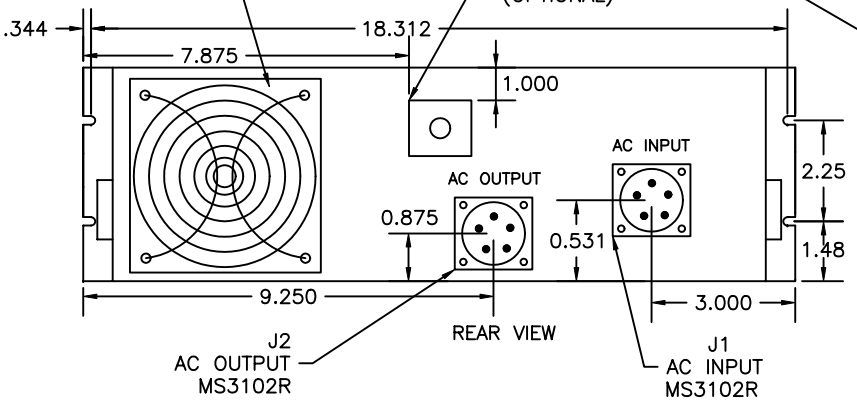
REVISIONS				
SYM	DESCRIPTION	BY	APP	DATE



WARNING: FOR CONTINUED PROTECTION AGAINST RISK OF FIRE, REPLACE FUSES WITH SAME TYPE & RATING.
 WARNING: NO USER SERVICEABLE PARTS INSIDE, REFER SERVICING TO QUALIFIED PERSONNEL ONLY.
 WARNING: USE ONLY BATTERY POWERED OR UNGROUNDED TEST EQUIPMENT WHEN SERVICING THIS EQUIPMENT.
 CAUTION: INTENDED FOR USE IN A PROTECTED ENVIRONMENT.

TOP COVER SCREEN

- NOTES:
1. ALL DIMENSIONS ARE IN INCHES.
 2. EXTERIOR ANS# 61 GRAY SEMI-GLOSS
 3. HANDLES PROJECT 1.50 INCHES FROM PANEL SURFACE.



UNLESS OTHERWISE SPECIFIED DIMENSIONS ARE IN INCHES. TOLERANCES:		THIS DRAWING CONTAINS PROPRIETARY INFORMATION AND MAY NOT BE REPRODUCED WITHOUT THE PERMISSION OF NOVA ELECTRIC.	
FRAC.	DEC.	DATE	DATE
+/-1/64XX=+/-02	+/-2	ZIN	12-10-01
XXX=+/-005DEG		CHECKED BY:	DATE
		MY	12-10-01
		APPROVED BY:	DATE
www.novaelectric.com		SCALE: NTS	

NOVA	NOVA ELECTRIC A DIV. OF TECHNOLOGY DYNAMICS INC. 100 SCHOOL STREET BERGENFIELD, N.J. 07621-2915	
	TITLE: OUTLINE DRAWING TYPICAL "GSFC" 1-2KVA RACKMOUNT F/C	
SIZE:	C	REV.:
	980833	-
CAGE: 29019		SHEET 1 OF 1