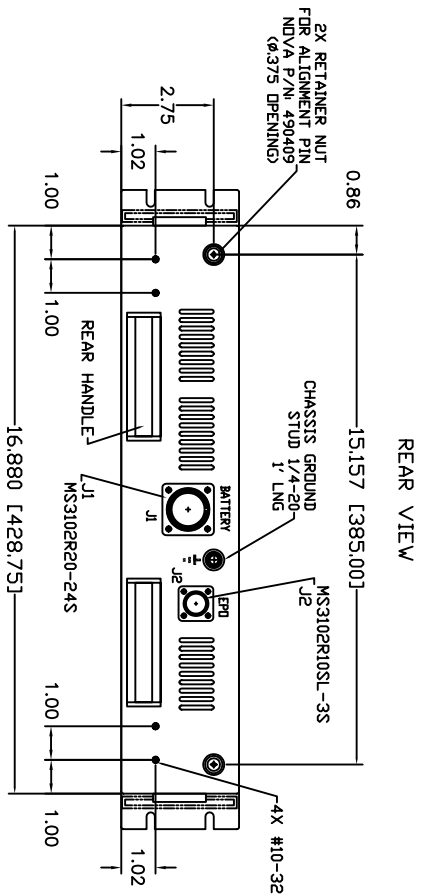
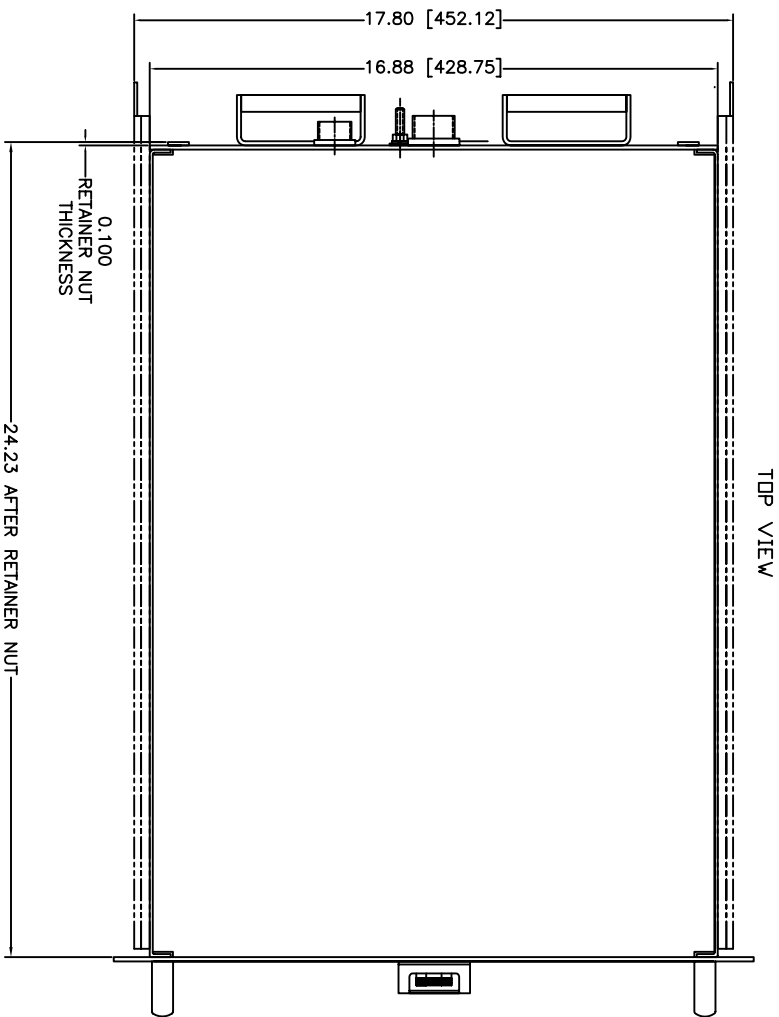
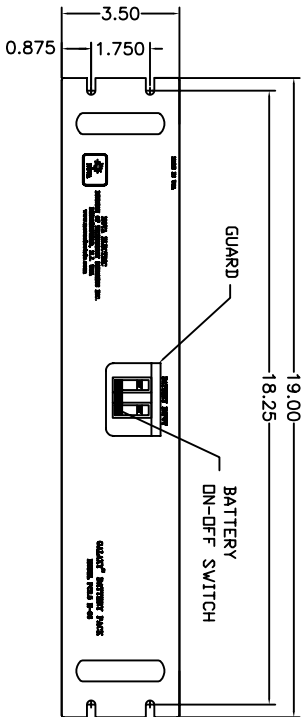
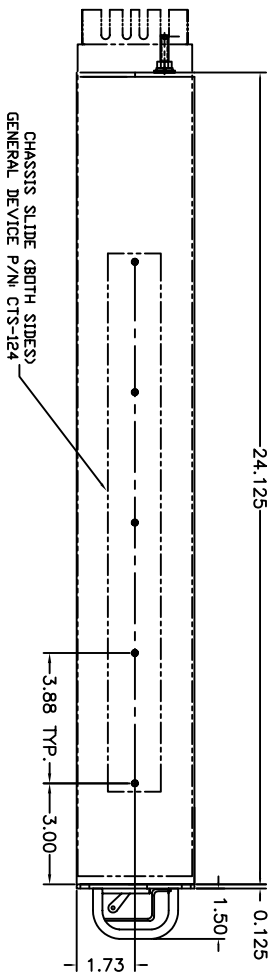


BATTERY BOX FOR 5KVA UPS

REVISIONS				
SY#	DESCRIPTION	BY	APP	DATE
-	-	-	-	-



CONNECTOR PIN DESIGNATION

EPO		BATTERY	
J2	MS3102R10SL-3S	J1	MS3102R20-24P
PIN A	+ TRIP COIL	PIN A	TEMP SENSE
PIN B	- TRIP COIL	PIN B	BATTERY +
PIN C	BREAKER CTR POINT	PIN C	TEMP SENSE
		PIN D	BATTERY -

NOTES:

- FRONT PANEL COLOR ANSI #61 GRAY SEMI-GLOSS.
- ALL OTHER SURFACES ARE IRRIDITED.
- ESTIMATED WEIGHT - 120LBS.

NOVA ELECTRIC
A DIV. OF REBELLION DRIVERS INC.
100 SCHOOL STREET
BERGENFIELD, N.J. 07821-2915

NOVA

THE GENERAL CONTRACTOR
PROVIDES THE SERVICES
AND SHALL NOT BE RESPONSIBLE
FOR THE DESIGN OF THE
PROJECT OR THE DESIGN
OF THE DRAWING.

DATE: 04/28/04
DATE: 04/28/04
DATE: 04/28/04

DESIGN: N.T.
CHECKED: [Signature]
APPROVED: [Signature]

TITLE: BATTERY DRAWER NP5K-96HE
DUTYLINE DWG

SIZE: D
980985

SCALE: 1/1
SHEET: 1 OF 1

HTTP://WWW.NOVAELECTRIC.COM