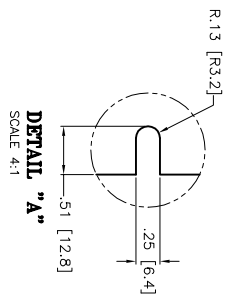
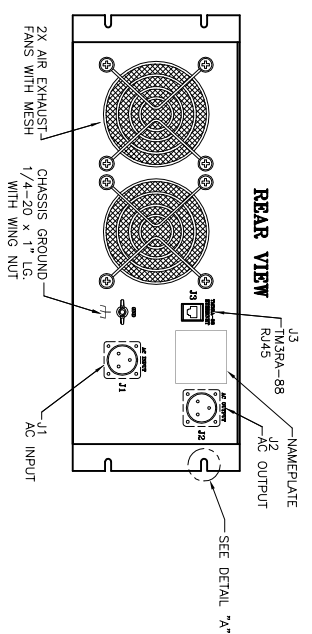
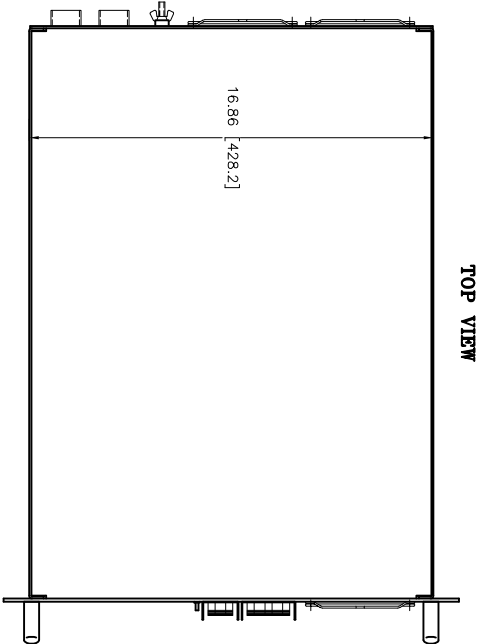
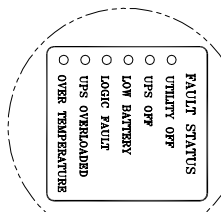
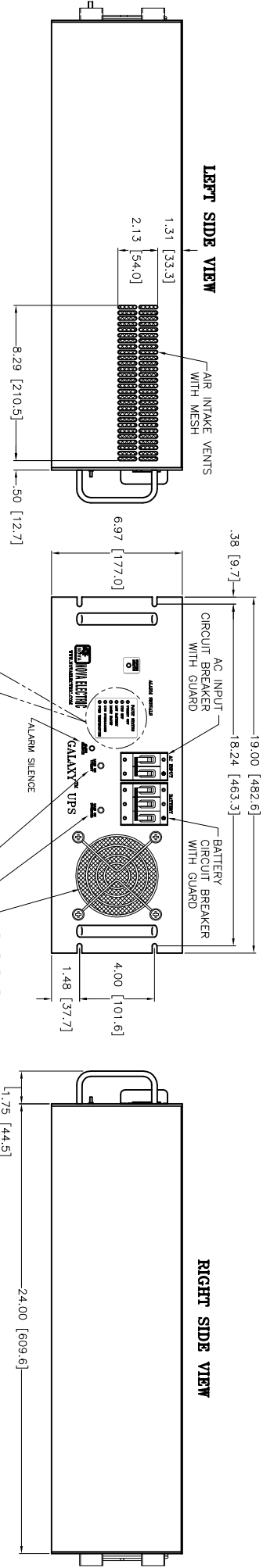


REVISIONS			
LT#	DESCRIPTION	BY	DATE
A	ADDED METRIC DIMENSIONS	RL	1/05/15
-	-	-	-



CONNECTORS PIN DESIGNATION

J1 AC INPUT

PIN DESCRIPTION	MS3102R20-19P
A	LINE
B	NEUTRAL
C	GROUND

J2 AC OUTPUT

PIN DESCRIPTION	MS3102R20-19S
A	LINE
B	NEUTRAL
C	GROUND

- NOTES:
1. ALL DIMENSIONS ARE IN INCHES AND MILLIMETERS [mm]
  2. ALL UNDIMENSIONED PICTORIAL CONFIGURATIONS ARE FOR REFERENCE ONLY.
  3. EXTERIOR COLOR - ANSI #61 GRAY SEMI-GLOSS.
  4. APPROXIMATE WEIGHT: 95 LBS.

THIS DRAWING IN DESIGN AND DETAIL IS THE PROPERTY OF NOVVA ELECTRIC. NO PARTS OR INFORMATION HEREIN ARE TO BE REPRODUCED OR TRANSMITTED IN ANY FORM OR BY ANY MEANS, ELECTRONIC OR MECHANICAL, INCLUDING PHOTOCOPYING, RECORDING, OR BY ANY INFORMATION STORAGE AND RETRIEVAL SYSTEM, WITHOUT THE WRITTEN PERMISSION OF NOVVA ELECTRIC. ALL RIGHTS OF DESIGN OR INVENTION ARE RESERVED.

NOVA ELECTRIC  
A DIV. OF TECHNOLOGICAL DRINKING INC.  
BERGENFIELD, N.J. 07821-2915

NOVA ELECTRIC  
A DIV. OF TECHNOLOGICAL DRINKING INC.  
BERGENFIELD, N.J. 07821-2915

DATE: 07/09/11  
BY: BT  
CHECKED: AL  
APPROVED: AL

SCALE: 4:1  
CAGE: 29019  
SHEET: 1 OF 1