

ULTRA-LIGHTWEIGHT *RUGGED GALAXY™ SERIES DC-AC INVERTER*

COMPACT 3U CHASSIS

2 - 5KVA OUTPUT POWER

270 VDC NOMINAL WIDE RANGE INPUT

OPTIONAL SNMP COMMUNICATIONS

WHEN EVERY POUND COUNTS!



APPLICATIONS

Utilizing field proven fully isolated topology, this family of rugged Inverters is suitable for harsh environments and can be customized for unique applications including:

- Shelters
- Tactical Systems
- Shipboard power
- Servers
- MIL-STD-810
- MIL-S-901
- HMMWVs
- Mobile Systems
- Ground support
- Transit Cases
- MIL-STD-461
- MIL-STD-167



NOVA ELECTRIC

www.novaelectric.com

novasales@theallpower.com

AS 9100
BUREAU VERITAS
Certification
Certificate No. US000267-1



A Leader in DC-AC Inverter Technology since 1966 - 500VA to 500+KVA

MADE IN USA

ULTRA-LIGHTWEIGHT PURE SINEWAVE DC-AC INVERTER

MEETS MIL-STD-810, MIL-STD-167, MIL-S-901, MIL-STD-740, & MIL-STD-461

APPLICATIONS

The rugged Ultra Lightweight Galaxy Series Inverter is designed to provide years of reliable service in harsh shock, vibration, humidity, and EMI environments. Applications include Submarine, Shipboard, HMMVW, UAV, Shelter, and Mobile Power Units.

OPTIONS

- 400 Hz Output
- High IP Protection for front / rear panels
- AUX DC Outputs
- Ruggedization against high shock, vibration and humidity
- MS connector mates and multiple output outlets
- Chassis Slide Guides
- Electromechanical transfer switch
- Custom Enclosures
- CAD Free Connectors
- Non-PVC wiring
- Bulkhead mounting

ELECTRICAL SPECIFICATIONS

Input Voltage: 270 VDC Nominal, 180-355 VDC Operating Range (other ranges available)
 Output Voltage: 120, 208, or 230 VAC (specify)
 Frequency: 50 / 60 / 400 Hz. Available
 Voltage Regulation: $\pm 2\%$ NL to FL
 Frequency Regulation: $\pm 0.5\%$ NL to FL
 Harmonic Distortion: 5% THD, 3% typical
 Input Power Factor: 0.95 or Better @ half-full load (except 3 phase input models)
 Efficiency at full load: 85% @ full load typical
 Connections: MS Connector (mates optional)

NOMINAL DIMENSIONS

5.25" x 19" x 24"

OPTIONAL INDICATORS

Status (Red / Green)
 Inverter Off (Red)
 Logic Fault (Red)
 Over Temperature (Red)
 Load on Utility (Red) Optional with transfer switch

ENVIRONMENTAL SPECIFICATIONS

UPS Operating Temp.: -20° to +55°C
 (Extended ranges optional - Consult factory)
 UPS Storage Temp. Range: -40° to +71°C
 Humidity: to 95% non-condensing
 Elevation: 15,000 Ft. (4,572m) operating;
 40,000 ft. (12,192m) non-operating
 Shock: 20g for 11ms
 Audible Noise: Less than 55 dbA at 5 ft.

OPTIONAL REMOTE CONTACTS/COMMUNICATIONS

SNMP V1.0 via CAT-5 Connector
 Major Alarm: Logic Fault, Overtemperature, Overload
 Minor Alarm: Utility Off
 RS 232 (Available-Optional) Via DB 9 Connector
 Alarm Contacts(Available-Optional)

OPTIONAL PROTECTIVE FEATURES

DC Input Circuit Breaker, AC Output Circuit Breaker, and Audible Alarm with Silence Switch

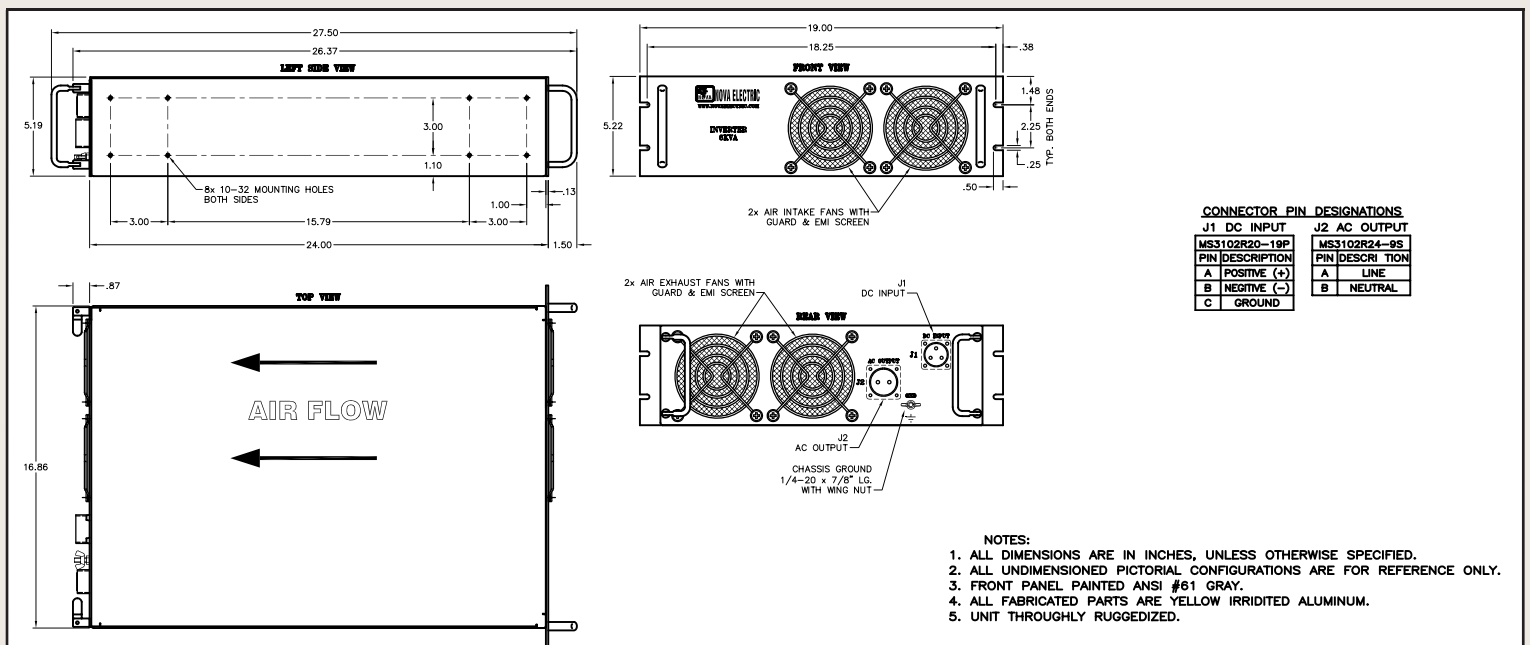
PARTIAL MODEL SELECTION

120 VAC OUTPUT MODELS

MODEL	OUTPUT VAC	OUTPUT FREQUENCY	CONTINUOUS OUTPUT POWER	WEIGHT LBS.	SIZE (HxWxD)
GL2K60-270	120 VAC	60 Hz	2KVA	55	5.25" x 19" x 24"
GL3K60-270	120 VAC	60 Hz	3KVA	57	5.25" x 19" x 24"
GL4K60-270	120 VAC	60 Hz	4KVA	60	5.25" x 19" x 24"
GL5K60-270	120 VAC	60 Hz	5KVA	60	5.25" x 19" x 24"

220 VAC OUTPUT MODELS

MODEL	OUTPUT VAC	OUTPUT FREQUENCY	CONTINUOUS OUTPUT POWER	WEIGHT LBS.	SIZE (HxWxD)
GL2K50-270(220)	220 VAC	50 Hz	2KVA	55	5.25" x 19" x 24"
GL3K50-270(220)	220 VAC	50 Hz	3KVA	57	5.25" x 19" x 24"
GL4K50-270(220)	220 VAC	50 Hz	4KVA	60	5.25" x 19" x 24"
GL5K50-270(220)	220 VAC	50 Hz	5KVA	60	5.25" x 19" x 24"



WEB : www.novaelectric.com
 E-Mail : novasales@theallpower.com
 PHONE : (201) 385-0500 FAX : (201) 385-0702



NOVA ELECTRIC

A Division of
 TECHNOLOGY DYNAMICS, INC.
 100 School St., Bergenfield NJ 07621

