

# RUGGED AIRCRAFT GALAXY™ SERIES TRUE ONLINE UPS 1 - 1.5 - 2 KVA 19" Rack Mount 4U High



## APPLICATIONS

Utilizing field proven technology, this family of rugged solid-state sinewave frequency converters is suitable for harsh environments and can be customized for unique applications including:

- Helicopters
- Tactical Systems
- Shelters
- MIL-STD-810
- MIL-STD-901
- Aircraft
- Mobile Systems
- Ground support
- MIL-STD-461
- MIL-STD-167



**NOVA ELECTRIC**  
[www.novaelectric.com](http://www.novaelectric.com)  
[novasales@theallpower.com](mailto:novasales@theallpower.com)

AS 9100  
BUREAU VERITAS  
Certification  
Certificate No. 02008287-1



A Leader in UPS Technology since 1966 - 500VA to 500KVA

MADE IN THE USA

# TRUE ONLINE RUGGED AIRCRAFT UPS

CAN MEET MIL-STD-810, MIL-STD-1399, MIL-STD-901, MIL-STD-704, & MIL-STD-461 OPTIONALLY

## APPLICATIONS

This Aircraft Galaxy Series UPS System is specifically designed for airborne applications. The UPS has a three-phase input of 115/200 VAC, 400 Hz and a pure sinewave output of 120 VAC, 60Hz Single-Phase. This model contains all the features standard on other Galaxy Series units, as well as additional features that make it ideal for aircraft applications, including additional ruggedization, an internal EMI reduction package, and premium long life batteries.

## OPTIONS

- Single-Phase Input
- EPO Circuit
- MS Connector Mates
- Chassis Slides
- True RS-232 Interface Port
- Run Time to 24+ Hours
- Custom Cabinets & Turnkey Solutions
- SNMP

## SPECIFICATIONS

### ELECTRICAL

Frequency: Specify 50, 60, or 400Hz  
 Voltage Regulation:  $\pm 1\%$  NL to FL  
 Frequency Regulation:  $\pm 0.5\%$  NL to FL  
 Harmonic Distortion: 5% THD  
 Load Power Factor: 0.7 lead to 0.7 lag  
 Efficiency at full load: 75-80% typical  
 Overload: 125% for 5 minutes

### INTERNAL BATTERIES

Premium 8-10 year life wide temp batteries which are sealed, maintenance-free, and user replaceable.

### PROTECTIVE FEATURES

AC & DC Input Circuit Breakers, Low Battery Shut Off, Overload & Thermal Protected, Input Under / Overvoltage Protected, Audible Alarm with Silence Switch

### ENVIRONMENTAL

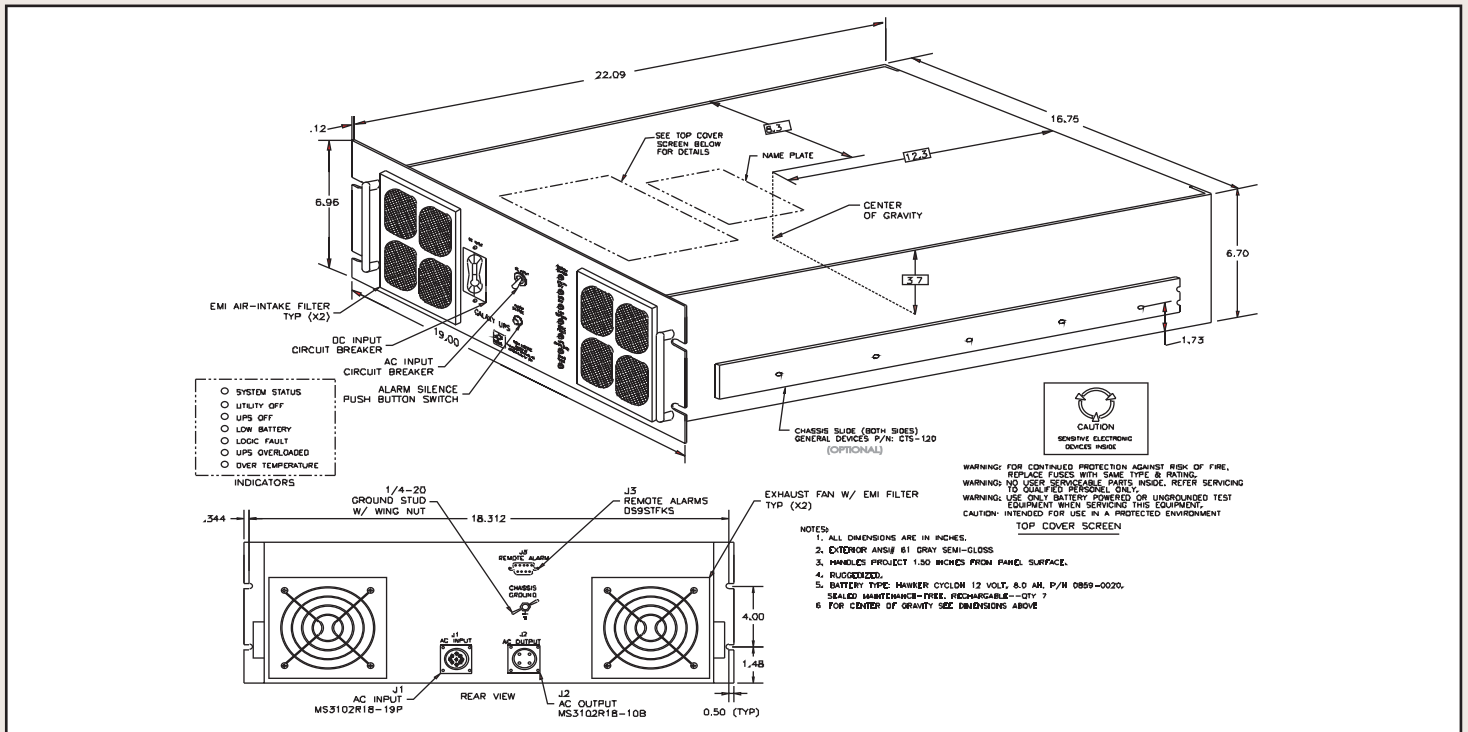
Operating Temp.:  $-20^{\circ}$  to  $+50^{\circ}$ C  
 Storage Temp. Range:  $-40^{\circ}$  to  $+60^{\circ}$ C  
 Humidity: to 95% non-condensing  
 Elevation: 15,000 Ft. (4,572m) operating;  
 40,000 ft. (12,192m) non-operating  
 Shock/Vibration: per MIL-STD-810  
 Audible Noise: Less than 55 dbA at 5 ft.  
 EMI: per MIL-STD-461

### ALARMS & DIAGNOSTICS

System Status (Green/Red)  
 Utility Off (Red)      UPS Overload (Red)  
 UPS Off (Red)      Over Temp. (Red)  
 Low Battery (Red)  
 Logic Fault (Red)  
 Alarm Contacts: Standard  
 RS 232: Optional  
 SNMP: Optional

## MODEL SELECTION

PARTIAL MODEL SELECTION	KVA	INPUT	OUTPUT	UPS LBS	RUN TIME
GRSL11-1K60-115/200-120	1	115/200 VAC	120 VAC	110	15 MIN.
GRSL11-1.5K60-115/200-120	1.5	115/200 VAC	120 VAC	120	10 MIN.
GRSL11-2K60-115/200-120	2	115/200 VAC	120 VAC	130	5 MIN.



WEB : [www.novaelectric.com](http://www.novaelectric.com)  
 E-Mail : [novasales@theallpower.com](mailto:novasales@theallpower.com)  
 PHONE : (201) 385-0500 FAX : (201) 385-0702



**NOVA ELECTRIC**  
 A Division of  
 TECHNOLOGY DYNAMICS, INC.  
 100 School St., Bergenfield NJ 07621

