



NC11 Series - FREE STANDING TRUE-ON-LINE UPS

UPS System 10-30 kVA (120/208 and 220/380 VAC)

Nova Electric's NC11-Series UPS applies advanced technology that increases performance and reliability. The units use dual high speed DSPs with digital control to ensure high quality power, high input power factor and low input current distortion. Built in batteries or separate batteries are offered.



FREE STANDING TRUE-ON-LINE UPS

For more information, please visit us at www.novaelectric.com or email us at novasales@theallpower.com

NOVA ELECTRIC *Leader in power conversion technology since 1966*
100 School Street, Bergenfield, NJ 07621 • Phone: (201) 385 - 0500 Fax: (201) 385 - 0702

Specifications subject to change without notice.





FEATURES

UPS System 10-30 kVA (120/208 and 220/380 VAC)

FRIENDLY USER INTERFACE

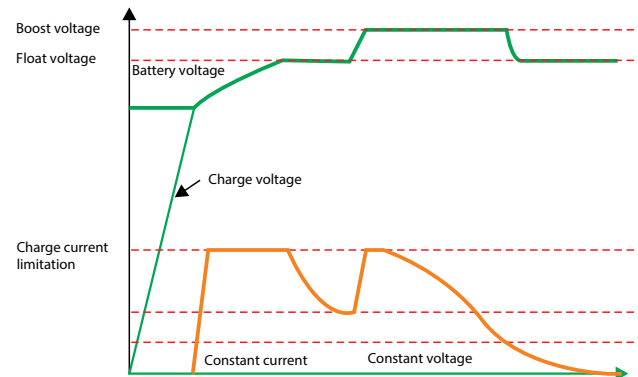
LCD and LED accurately display the comprehensive status of the UPS.

UPS parameters can be modified easily according to different site applications via LCD or software.



INTELLIGENT CHARGING MANAGEMENT

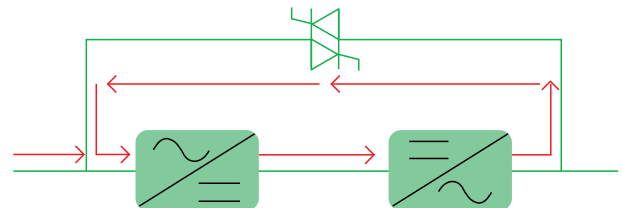
The system intelligently controls the process of the charging and discharging, effectively improving the life time of the battery.



COMPREHENSIVE AND RELIABLE PROTECTION

Self-diagnosis provide a complete UPS check-out at system start-up. Multiple protection circuits provide protection for overload, over temperature, battery over or under voltage, fan failure, and short circuits.

SYSTEM BLOCK DIAGRAM

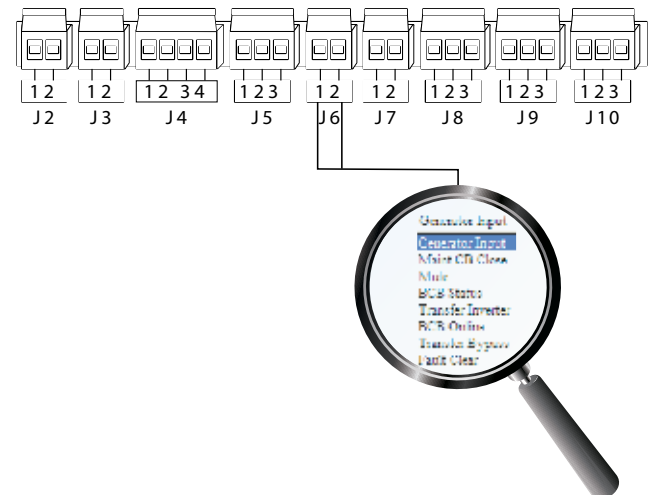


BATTERY RUN TIMES

10 KVA / 8 KW	4 MIN	WITH 20 PCS	12V / 9AH
10 KVA / 8 KW	12 MIN	WITH 40 PCS	12V / 9AH
15 KVA / 12 KW	6 MIN	WITH 40 PCS	12V / 9AH
15 KVA / 12 KW	18 MIN	WITH 80 PCS	12V / 9AH
20 KVA / 16 KW	4 MIN	WITH 40 PCS	12V / 9AH
20 KVA / 16 KW	12 MIN	WITH 80 PCS	12V / 9AH
30 KVA / 16 KW	6 MIN	WITH 80 PCS	12V / 9AH

PROGRAMMABLE DRY CONTACTS

Programmable dry contacts are available in all NC series UPS. Customers can easily expand or modify the definition of each port.



For more information, please visit us at www.novaelectric.com or email us at novasales@theallpower.com

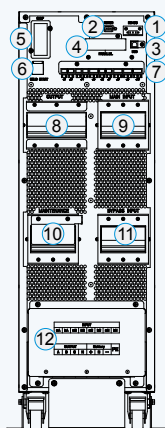


FEATURES

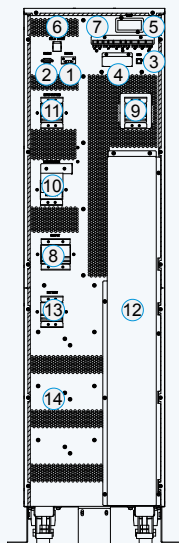
UPS System 10-30 kVA (120/208 and 220/380 VAC)

TYPICAL FEATURE LOCATIONS

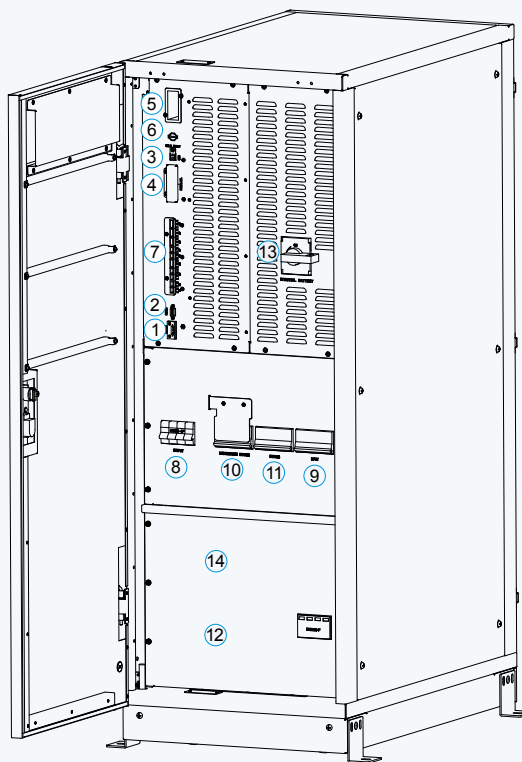
- | | |
|-----------------|--------------------------------|
| ① RS-485 Port | ⑧ Output Circuit Breaker |
| ② RS-232 Port | ⑨ Main input Circuit Breaker |
| ③ USB Port | ⑩ Maintenance Circuit Breaker |
| ④ Parallel Port | ⑪ Bypass Input Circuit Breaker |
| ⑤ SNMP | ⑫ Input/Output Terminals |
| ⑥ Cold Start | ⑬ Battery Circuit Breaker |
| ⑦ DRY Contacts | ⑭ Internal Battery |



NC11 10-30XL



NC11 1010XS

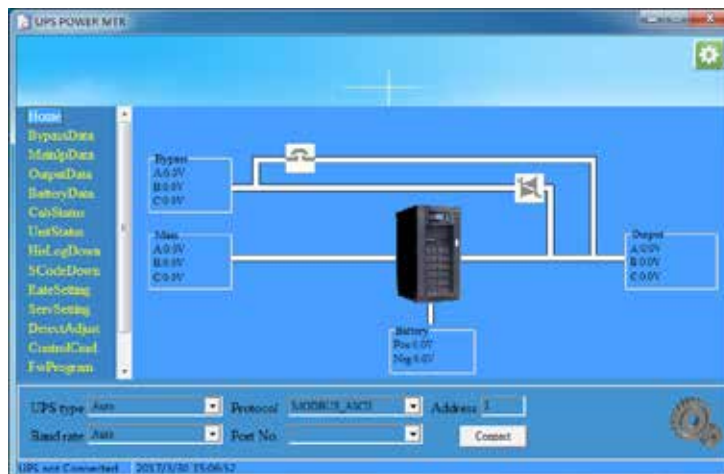


NC11 15-30XS



SMART MONITORING

The smart monitoring system supports the NC11 series with available interfaces using RS232, RS485 and USB.



For more information, please visit us at www.novaelectric.com or email us at novasales@theallpower.com

NOVA ELECTRIC Leader in power conversion technology since 1966
100 School Street, Bergenfield, NJ 07621 • Phone: (201) 385-0500 Fax: (201) 385-0702



Specifications subject to change without notice.



SPECIFICATIONS

UPS System 10-30 kVA (120/208 and 220/380 VAC)

MODEL		NC11010XS	NC11015XS	NC11020XS	NC11030XS
CAPACITY		10 kVA / 8 kW	15 kVA / 12 kW	20 kVA / 16 kW	30 kVA / 24 kW
INPUT					
PHASE		3 Phase + Neutral + Ground, 120/208 VAC (220/380 VAC available)			
VOLTAGE RANGE (L-L)		187-261 VAC (line-line), full load; 187-125 VAC (line-line), load derated linearly to 60%	166-261 VAC (line-line), full load; 166-125 VAC (line-line), load derated linearly to 60%		
FREQUENCY RANGE		40 Hz - 70 Hz			
THD-i		<5% (linear load)	<4% (linear load)		
POWER FACTOR		>0.99			
OUTPUT					
VOLTAGE		120/208 VAC (220/380 VAC available)			
VOLTAGE REGULATION		1.5%			
THD		<1.5% (linear load), <6% (non-linear load)			
POWER FACTOR		0.8			
FREQUENCY RANGE		50/60 Hz			
FREQUENCY PRECISION		0.1%			
OVERLOAD CAPABILITY		110% for 10 min; 125% for 1 min; 150% for 30 s; >150% for 200ms	110% for 60 min; 125% for 10 min;150% for 1 min; >150% for 200ms		
BATTERY					
VOLTAGE		±120VDC NOMINAL			
CHARGE POWER		20% of SYSTEM KW Rating			
VOLTAGE PRECISION		± 1%			
BATTERY NUMBER*		10kVA: 20pcs or 40pcs 9AH/12VDC; 15-30kVA: 40 or 80pcs 9AH/12VDC			
SYSTEM					
SYSTEM EFFICIENCY	Normal	93%	94%		
	Battery	92.5%	93%		
DISPLAY/INTERFACE		LCD + LED + Buttons			
IP CLASS		IP20			
INTERFACE		Standard: RS232, RS485, Dual input kit; Option: SNMP, Dry contacts, Parallel kit, Battery cold start			
TEMPERATURE		OPERATING : 0-40°C (to 50°C with 15% derating) STORAGE: -20°C to +50°C			
RELATIVE HUMIDITY		0-95% (non-condensing)			
NOISE		58dB @ 100% load, 52dB @ 45% load (1 meter away)	70dB @ 100% load, 62dB @ 45% load (1 meter away)		
MECHANICAL					
APPROX. WEIGHT (EXCLUDING BATTERIES)		113.5 lbs [51.5 kg]	304.2 lbs [138 kg]	308.6 lbs [140 kg]	308.6 lbs [140 kg]
APPROX. DIMENSION (W x D x H)		250 mm x 840 mm x 715 mm 9.84" x 33.07" x 28.15"	500 mm x 840 mm x 1400 mm 19.69" x 33.07" x 55.12"		

* External battery cabinets available for increased run time.

For more information, please visit us at www.novaelectric.com or email us at novasales@theallpower.com