

RUGGED RCGL SERIES PURE-SINEWAVE DC-AC INVERTERS

Input: 24 or 48VDC
Output: 120V or 220V 1Ø
50 or 60Hz
Power: 3KW



APPLICATIONS

Utilizing field proven technology, this family of rugged pure sinewave DC-AC Inverters is suitable for harsh environments and can be customized for unique applications including:

- ☐ Military Shelters
- ☐ Tactical Systems
- ☐ Ground support
- ☐ MIL-STD-810
- ☐ Utility Applications
- ☐ Mobile Systems
- ☐ Communications
- ☐ MIL-STD-461



NOVA ELECTRIC
www.novaelectric.com
novasales@theallpower.com

A Leader in DC-AC Inverter Technology since 1966 - 500VA to 500+KVA

MADE IN USA

Specifications subject to change without notice.

PURE SINEWAVE DC-AC INVERTER

SPECIFICATIONS

FEATURES

- Microprocessor based design with absolutely stable frequency.
- Panel LEDs for battery voltage & load level.
- Compact and light weight, yet rugged and vehicle rated.
- 91-93% efficient.
- Tightly regulated output voltage and frequency.
- Switch selectable 50 or 60 Hz output.
- Capable of driving highly reactive loads such as electric tools and appliances.
- Capable of driving highly capacitive loads such as switching power supplies.
- Very low harmonic distortion, THD<3%.
- Suitable for vehicle mounting.
- Switch selectable $\pm 10V$ output change.
- Load Controlled Cooling fan.

ELECTRICAL

Input Voltage: 24 or 48 V
Output Voltage 110V model: 100/110/120 VAC
Output Voltage 220V model: 220/230/240 VAC
Output Frequency: 50 or 60 HZ
(User Selectable + 0.05% Accuracy)
Continuous Power Rating: 3000W
Surge Rating: 6000W
Efficiency (full load): 120V model 91%
Efficiency (full load): 220V model 93%
No load Current: <1.0W Sleep Mode
Output Waveform Sinewave: <3% THD
Output Regulation: $\pm 3\%$
MTBF: over 100,000 hours per field data
MTTR: 30 minutes

PROTECTIVE FEATURES

Overload, Short Circuit, Reverse Polarity (Fuse), O.T, Over/Under Input Voltage.

ENVIRONMENTAL

Operating Temperature: -20°C to $+50^{\circ}\text{C}$
Storage Temperature: -40°C to $+71^{\circ}\text{C}$
Shock: 20g / 11ms per MIL-STD-810
Vibration: per MIL-STD-810
Humidity: per MIL-STD-810 to 95% non condensing
EMI: per MIL-STD-461 CE102, CS101, CS114, CS115, CS116, RE102, and RS103

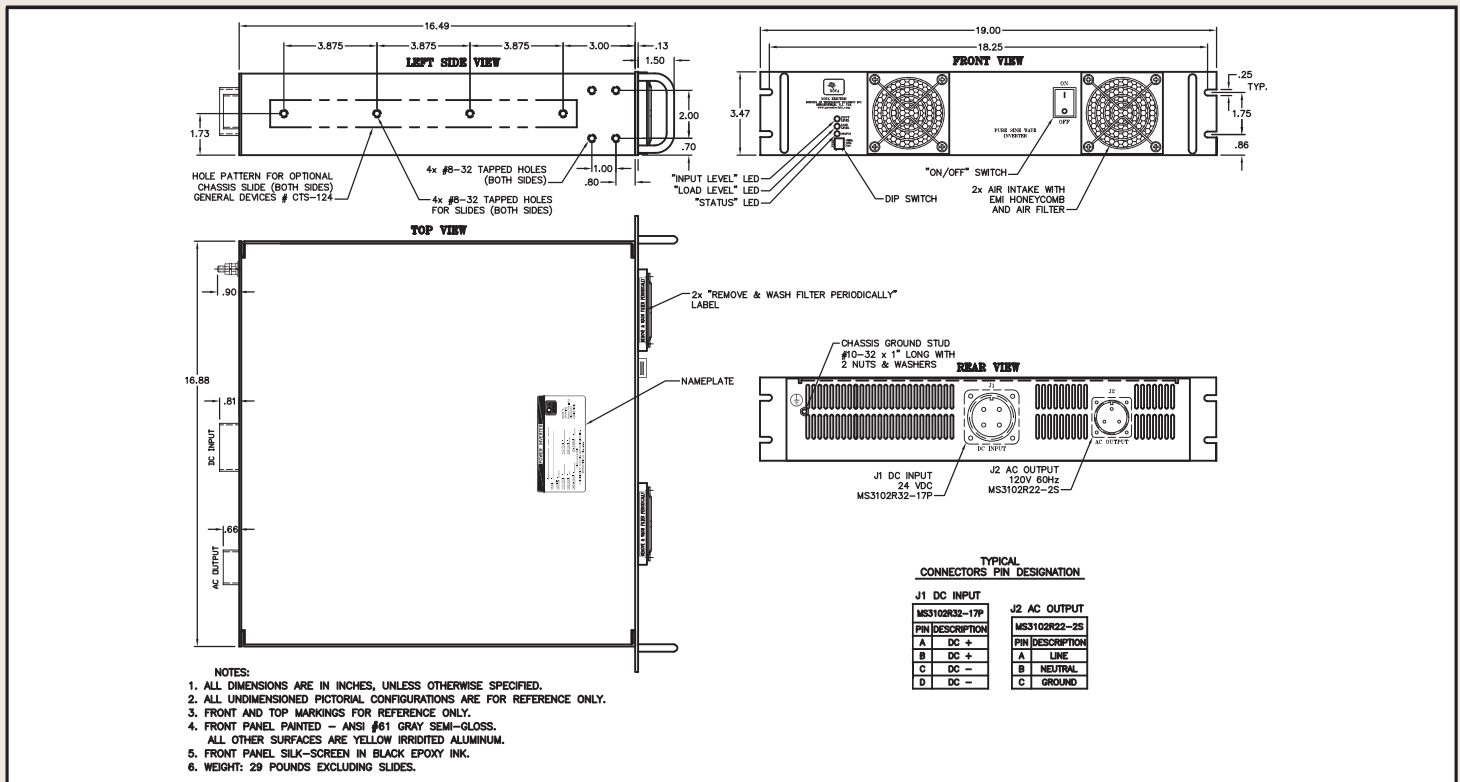
POPULAR OPTIONS

- MS Connector Mates
- Chassis Slides
- Additional Ruggedization against Shock / Vibration / Humidity to MIL-STD-810
- Weatherproofing Package (Sealed Breakers / Switches, additional dust filtration, and louvered air intake / exhaust for protection from splashing water
- Internal Electromechanical Transfer Switch

MODEL SELECTION

MODEL	INPUT RANGE VDC	OUTPUT VAC	OUTPUT FREQ. (HZ)	CONTINUOUS OUTPUT POWER	APPROX. WEIGHT (LB)	SIZE (HxWxL) (INCHES)
RCGL3K-24-120	21-30	120	50 OR 60	3KW	29 LB	3.5 x 19 x 16.5
RCGL3K-24-220	21-30	220	50 OR 60	3KW	29 LB	3.5 x 19 x 16.5
RCGL3K-48-120	42-60	120	50 OR 60	3KW	29 LB	3.5 x 19 x 16.5
RCGL3K-48-220	42-60	220	50 OR 60	3KW	29 LB	3.5 x 19 x 16.5

MECHANICAL SPECIFICATIONS



WEB : www.novaelectric.com

E-Mail : novasales@theallpower.com

PHONE : (201) 385-0500 FAX : (201) 385-0702



NOVA ELECTRIC

A Division of

TECHNOLOGY DYNAMICS, INC.

100 School St., Bergenfield NJ 07621