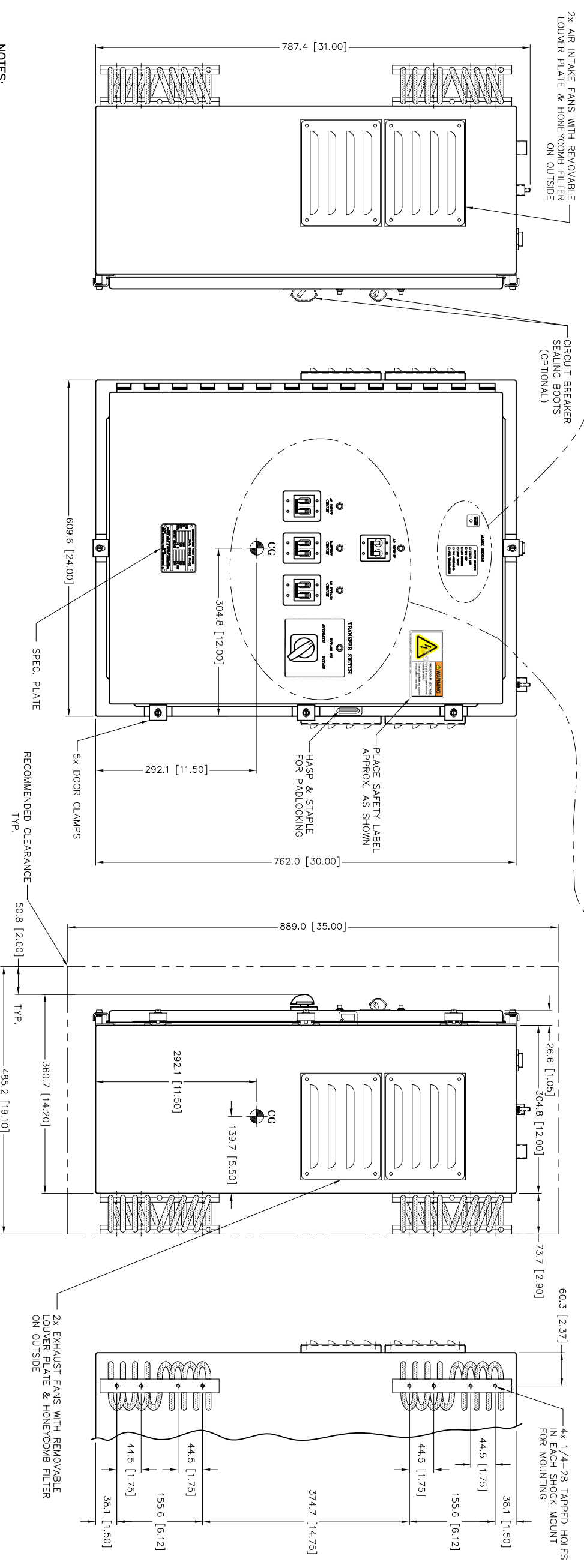
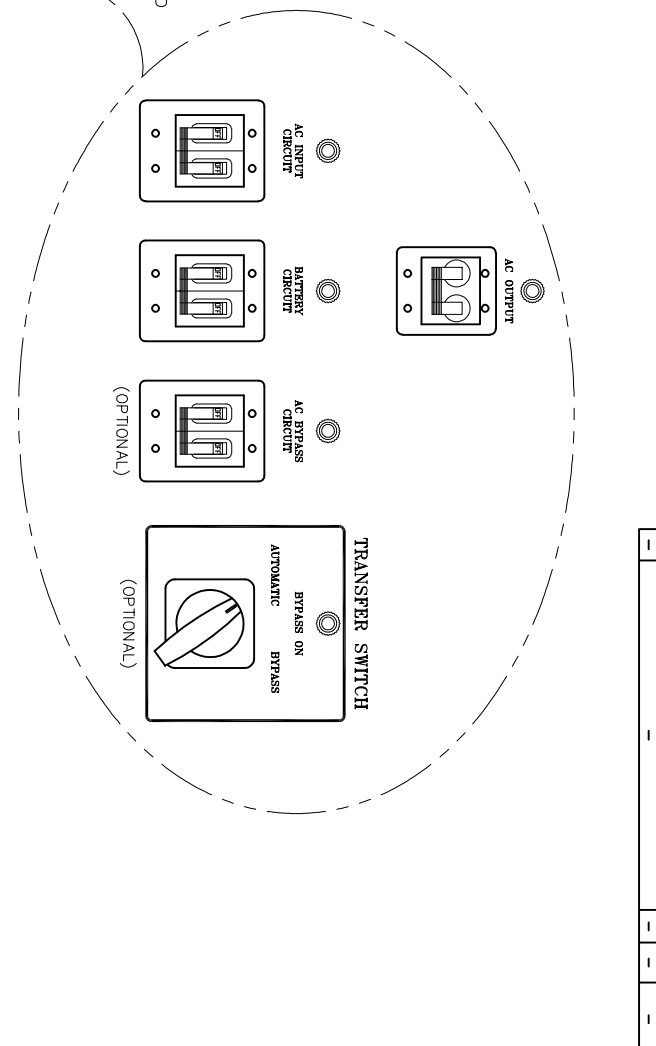
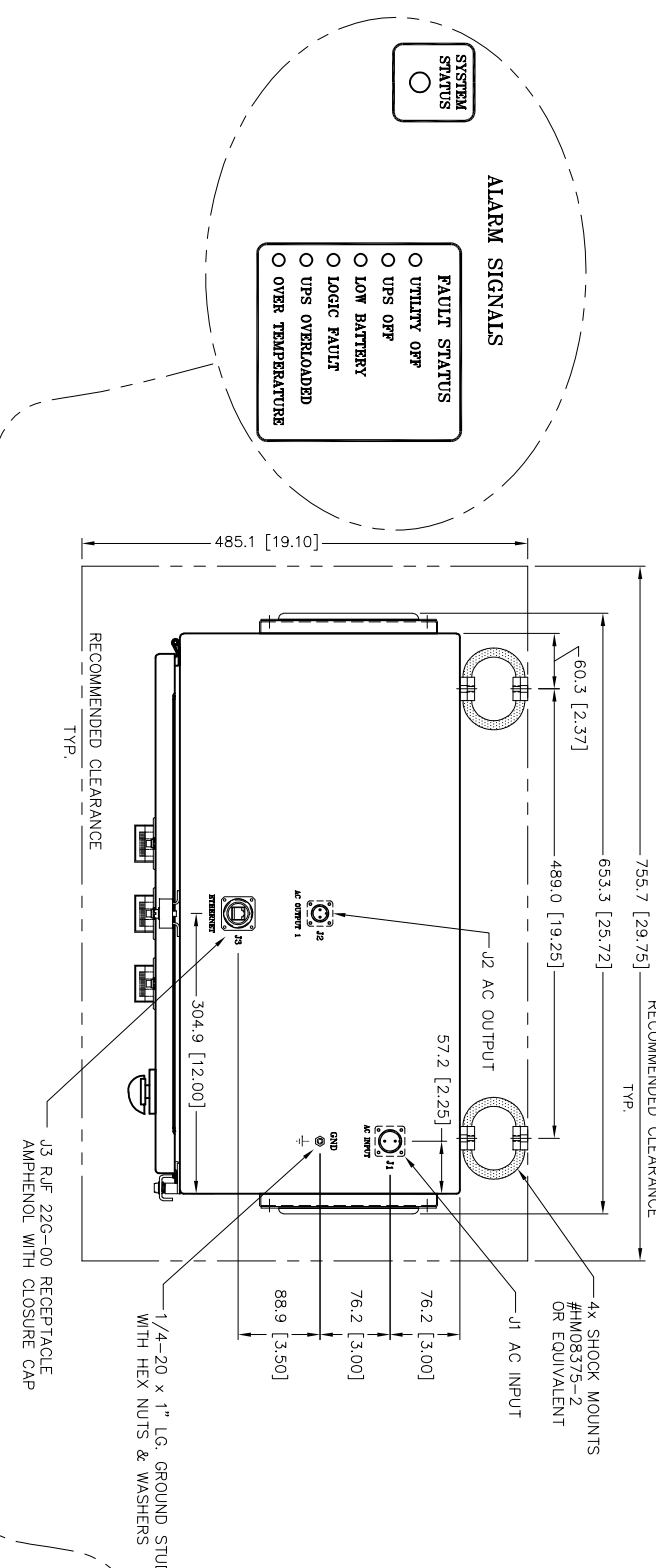


REVISIONS		
LTR	DESCRIPTION	BY / APR / DATE
-	-	-
-	-	-



- NOTES:
1. ALL DIMENSIONS ARE IN MILLIMETERS & [INCHES], UNLESS OTHERWISE SPECIFIED.
 2. ALL UNDIMENSIONED PICTORIAL CONFIGURATIONS ARE FOR REFERENCE ONLY.
 3. FRONT AND TOP MARKINGS FOR REFERENCE ONLY.
 4. APPROXIMATE WEIGHT = 234 LBS. INCLUDING BATTERIES.
 5. FINISH: CLEAR ZINC: PER ASTM B633 FE/ZNS TYPE III AND CLEAR CHROMATE PLATE ENTIRE CABINET INSIDE & OUTSIDE. POWDER COAT ENTIRE CABINET WITH DUPONT PFH-502-S8 GREY PAINT (ASA70).
 6. SHOCK MOUNT MATERIAL: ALUMINUM AND STAINLESS STEEL.
 7. CABINET MATERIAL: CARBON STEEL.
 8. ALL STAINLESS STEEL HARDWARE IS 316 GRADE.

J1 AC INPUT			J2 AC OUTPUT		
PIN	DESCRIPTION		PIN	DESCRIPTION	
A	LINE		A	LINE	
B	NEUTRAL		B	NEUTRAL	

PAPER COPIES SHALL BE SHREDDED WHEN NO LONGER REQUIRED. ELECTRONIC COPIES SHALL NOT BE DISCLOSED OUTSIDE OF THE INTENDED RECIPIENTS.

DATE	05/29/19	NOVA ELECTRIC
DATE	05/29/19	A DIV. OF TECHNOLOGY DYNAMICS INC.
DATE	05/29/19	100 SCHOOL STREET
DATE	05/29/19	BERGENFIELD, N.J. 07621-2915
DATE	05/29/19	OUTLINE DRAWING,
DATE	05/29/19	NGHSL11 (SERIES)
DATE	05/29/19	9981104
DATE	05/29/19	1

NOVA ELECTRIC
A DIV. OF TECHNOLOGY DYNAMICS INC.
100 SCHOOL STREET
BERGENFIELD, N.J. 07621-2915
OUTLINE DRAWING,
NGHSL11 (SERIES)
9981104
1