



# **GALAXY SERIES RUGGED SINGLE-PHASE OUTPUT 5-6 KW TRUE ONLINE UPS**

- *Military Applications*
- *Heavy Industrial Applications*
- *Transformer Isolated Topology*



**These units are suitable for applications such as:**

- *Military Shelters*
- *Ground Support*
- *Mobile Systems*
- *Tactical Systems*
- *Shipboard Applications*
- *Airborne Applications*
- *Military Ground Vehicles*
- *Communications Systems*



**NOVA ELECTRIC**



### POPULAR OPTIONS

- Premium Battery Cells
- Power Distribution Units
- MS Connector Mates and Multiple Output Outlets
- Chassis Slide Guides
- Internal Transfer Switch (Static or Electromechanical)
- Rugged Transit Cases and Custom Enclosures
- Additional Run Time via External Batteries
- 400 Hz Input and/or Output
- CAD Free Connectors
- Non-PVC wiring
- 28 VDC Input
- High IP Protection for Front / Rear Panels
- AUX DC Outputs
- Environmental Stress Screening Services

### CONTACT

100 School Street,  
Bergenfield, NJ 07621 USA

(201) 385-0500

[novaelectric.com](http://novaelectric.com)  
[info@novaelectric.com](mailto:info@novaelectric.com)

# GALAXY SERIES RUGGED SINGLE-PHASE OUTPUT

*5-6 KW True Online UPS*

## GENERAL OVERVIEW

Nova Electric's Galaxy-Series true online UPS Systems are high-reliability power sources specifically designed for demanding applications in high shock, vibration, humidity, and EMI environments. They can be built to meet MIL-STD-810, MIL-S-901, MIL-STD-1472, MIL-STD-461, MIL-STD-167 and other standards optionally. Transformer-isolated topology makes these UPSs suitable for very high inrush loads, such as motors and compressors. These models utilize the most durable components, offering maximum field-proven reliability for severe environment and high reliability applications.

## SPECIFICATIONS

### Electrical

FREQUENCY	Specify 50, 60, or 400Hz
VOLTAGE REGULATION	± 1% NL to FL
FREQUENCY REGULATION	± 0.5% NL to FL
HARMONIC DISTORTION	5% THD
POWER FACTOR	0.7 Lead to 0.7 Lag
EFFICIENCY AT FULL LOAD	75-80% Typical
OVERLOAD	125% for 5 Minutes

### Environmental

OPERATING TEMP.	-20° to +50°C
STORAGE TEMP. RANGE	-40°C to +71°C (Electronics Only)
HUMIDITY	to 95% Non-Condensing
ELEVATION	Operating: 15,000 Ft. (4,572 m) Non-Operating: 40,000 Ft. (12,192 m)
SHOCK	20 g, 11 mS
AUDIBLE NOISE	Less than 55 dbA at 5 ft

### External Batteries

7" High x 19" Wide x 21" Deep Rack Mount battery drawers containing sealed, maintenance-free, user replaceable batteries rated for 3-5 years lifetime. Premium, wide temperature batteries with 8-12 years lifetime are optional. Battery cabinets and racks also available with run time from 5 minutes to 24+ hours.

### Diagnostics

ALARM CONTACTS	Standard
SNMP OR RS232	Optional

### Protective Features

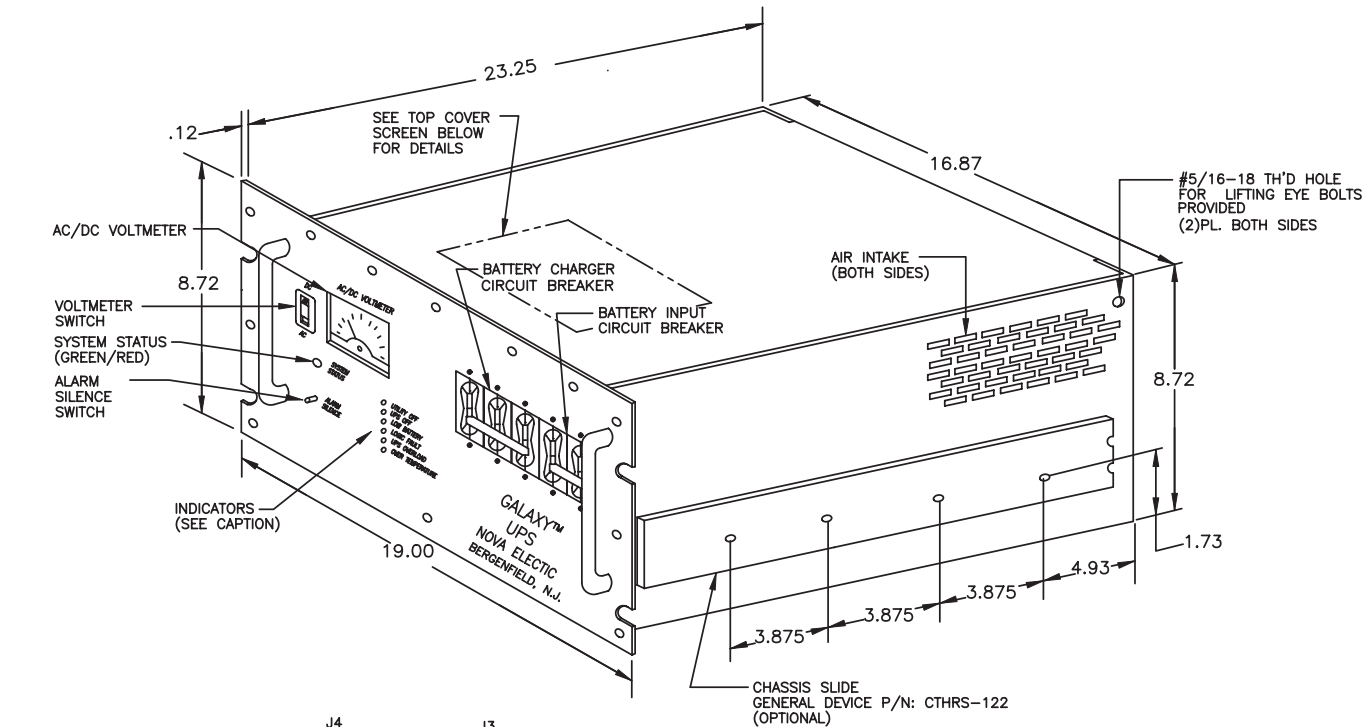
AC & DC INPUT CIRCUIT BREAKERS
LOW BATTERY SHUT OFF
OVERLOAD & THERMAL PROTECTED
INPUT UNDER / OVER VOLTAGE PROTECTED
AUDIBLE ALARM WITH SILENCE SWITCH



*MS Connectors Standard*

UPS MODEL	KVA	INPUT VAC	INPUT AMPS	OUTPUT	UPS LBS	BATTERY MODEL	RUNTIME	BATTERY LBS
GRS11-5K60-120-120	5	120	66	120VAC - 60Hz	200	PC5K-84-2	10 Mins	225
GRS11-5K50-220-220	5	220	39	220VAC - 50Hz	200	PC5K-156	11 Mins	188
GRS11-5K400-115-115	5	115	66	115VAC - 400Hz	200	PC5K-84-2	10 Mins	225
GRS11-5K60-120/208-120	5	120/208	23	120VAC - 60Hz	200	PC5K-168	12 Mins	225
GRS11-6K60-120-120	6	120	79	120VAC - 60Hz	225	PC6K-84-2	8 Mins	225
GRS11-6K50-220-220	6	220	47	220VAC - 50Hz	225	PC6K-156	9 Mins	188
GRS11-6K400-115-115	6	115	79	115VAC - 400Hz	225	PC6K-84-2	8 Mins	225
GRS11-6K60-120/208-120	6	120/208	28	120VAC - 60Hz	225	PC6K-168	10 Mins	225

## Typical UPS Outline Drawing

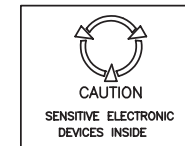
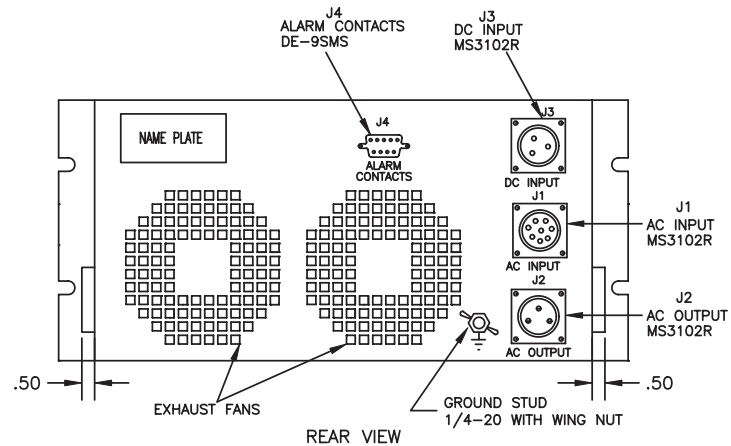


- UTILITY OFF
- UPS OFF
- LOW BATTERY
- LOGIC FAULT
- UPS OVERLOADED
- OVER TEMPERATURE

INDICATORS

### NOTES:

1. ALL DIMENSIONS ARE IN INCHES.
2. EXTERIOR COLOR ANSI #61 GRAY
3. RUGGEDIZED.



WARNING: FOR CONTINUED PROTECTION AGAINST RISK OF FIRE, REPLACE FUSES WITH SAME TYPE & RATING.

WARNING: NO USER SERVICEABLE PARTS INSIDE, REFER SERVICING TO QUALIFIED PERSONNEL ONLY.

WARNING: USE ONLY BATTERY POWERED OR UNGROUNDED TEST EQUIPMENT WHEN SERVICING THIS EQUIPMENT.

CAUTION: INTENDED FOR USE IN A PROTECTED ENVIRONMENT.

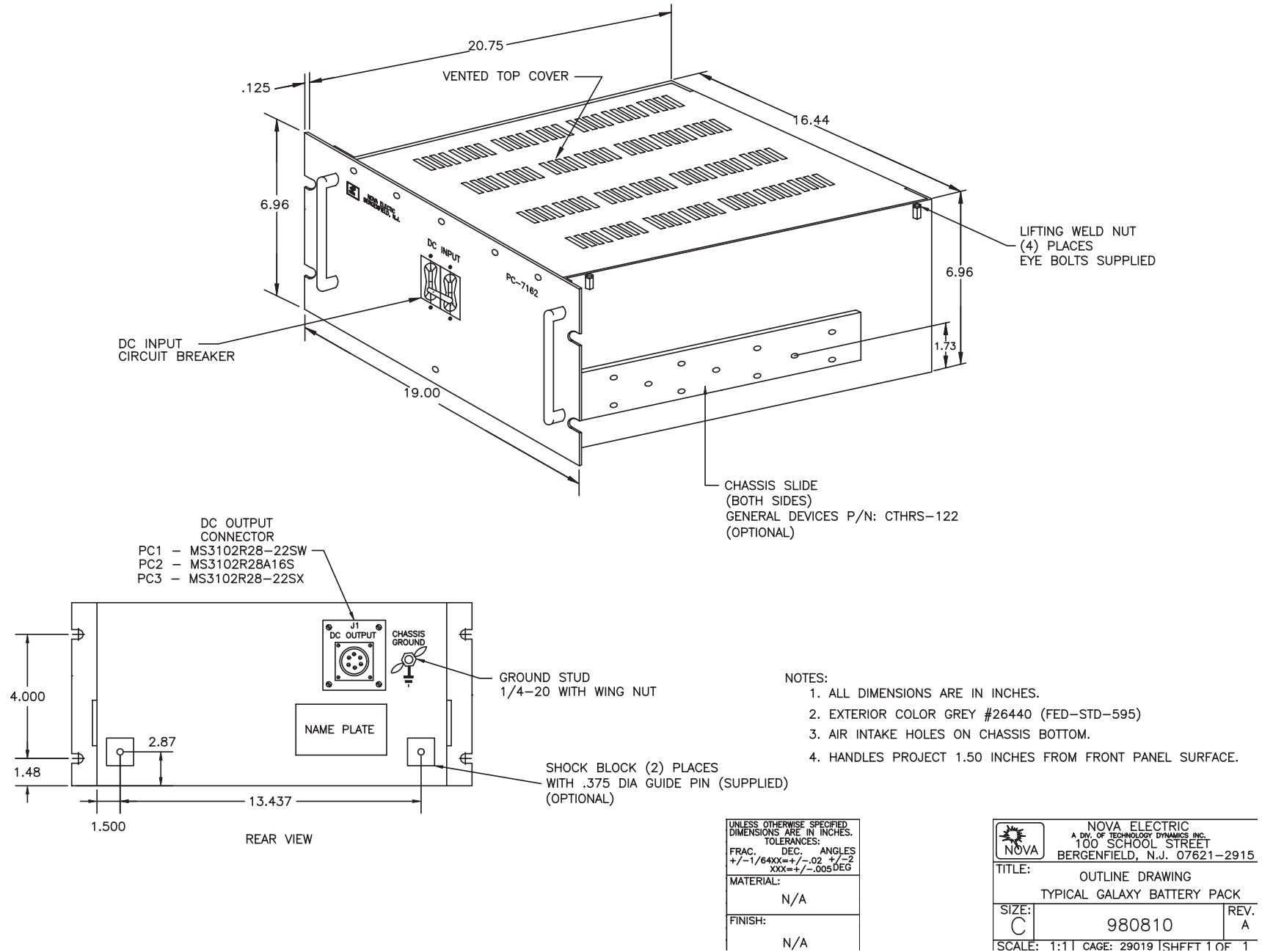
### TOP COVER SCREEN

UNLESS OTHERWISE SPECIFIED DIMENSIONS ARE IN INCHES. TOLERANCES:		
FRAC.	DEC.	ANGLES
+/-1/64XX=+/-0.02	+/-0.02	+/-2
XXX=+/-0.005	DEG	
MATERIAL:		
N/A		
FINISH:		
N/A		

NOVA ELECTRIC A DIV. OF TECHNOLOGY DYNAMICS INC. 100 SCHOOL STREET BERGENFIELD, N.J. 07621-2915		
TITLE:	OUTLINE DRAWING TYPICAL GALAXY 5-6 KW RACKMOUNT UPS	
SIZE:	890758	REV. -
C		



## Typical Battery Pack Outline Drawing







# RUGGED AC POWER SYSTEMS

**SELECT UNITS QUALIFIED TO MIL-STD-810, MIL-S-901, MIL-STD-1399, MIL-STD-461, MIL-STD-167, MIL-STD-740, RTCA/DO-160, AND MORE**

## RUGGED TRUE ONLINE UPS



500 W – 500+ KW

*Rack Mount, Bulkhead Mount, and Freestanding*

*Single and Three Phase*

*50, 60, and 400 Hz.*

## PURE SINEWAVE DC-AC INVERTERS



100 W – 500+ KW

*Rack Mount, Bulkhead Mount, and Freestanding*

*Single and Three Phase*

*50, 60, and 400 Hz.*

## SOLID-STATE FREQUENCY CONVERTERS



100 W – 500+ KW

*Rack Mount, Bulkhead Mount, and Freestanding*

*Single and Three Phase*

*50, 60, and 400 Hz.*

## POWER DISTRIBUTION UNITS (PDUs)



*Basic, Switched, Auto-Transfer Switching, and Metered Configurations*

*Rack Mount, Bulkhead Mount, and Freestanding*

*Single and Three Phase*

## CUSTOM EMI FILTERS



*For MIL-STD-461 Compliance*

*Rack Mount, Bulkhead Mount, and Freestanding*

*Single and Three Phase*

## RUGGED PORTABLE TRANSFORMERS



100 W – 500+ KW

*Rack Mount, Bulkhead Mount, and Freestanding*

*Single and Three Phase*

## EXTERNAL MAINTENANCE BYPASS SWITCHES (MBSS)



*Rack Mount, Bulkhead Mount, and Freestanding*

*Single and Three Phase*

## CUSTOM DESIGNS



*Designed & Built to Spec*

*Integrated AC & DC Capabilities*

*Multiple Outputs*

## RELIABLE AC POWER WHEN AND WHERE YOU NEED IT SEVERE ENVIRONMENT PRODUCTS



- AIRBORNE
- SHIPBOARD
- MOBILE
- RACK MOUNT & FREESTANDING

- 50, 60, AND 400 Hz
- AIR & WATER COOLED
- SINGLE AND THREE PHASE
- LIGHTWEIGHT DESIGNS

