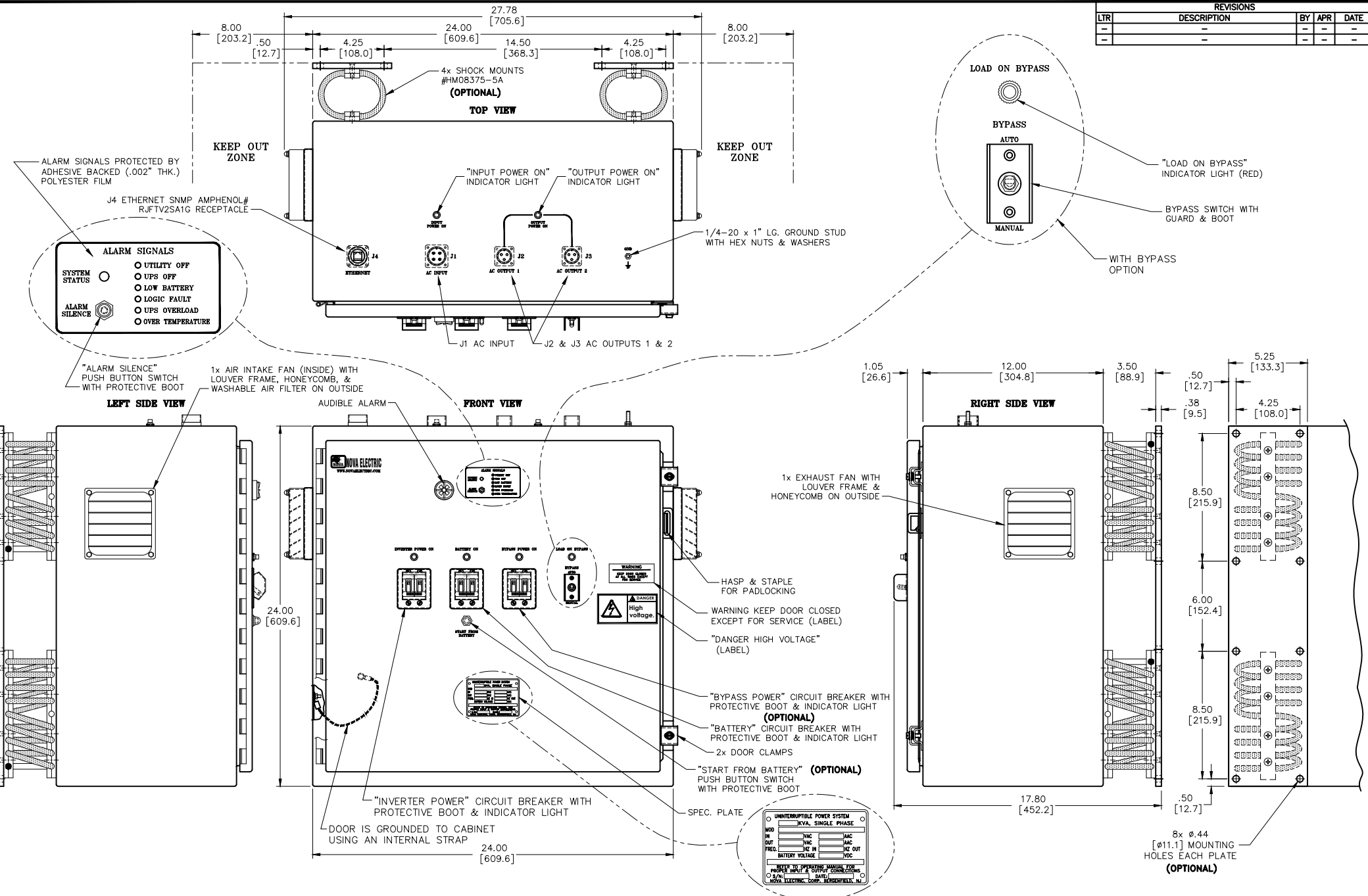


REVISIONS				
LTR	DESCRIPTION	BY	APR	DATE
-	-	-	-	-
-	-	-	-	-



- NOTES:**
- ALL DIMENSIONS ARE IN INCHES, & MILLIMETERS [mm].
  - ALL UNDIMENSIONED PICTORIAL CONFIGURATIONS ARE FOR REFERENCE ONLY.
  - FRONT AND TOP MARKINGS FOR REFERENCE ONLY.
  - NOMINAL CABINET DIMENSIONS: 24" HIGH x 24" WIDE x 12" DEEP.
  - ENCLOSURE PAINTED ANSI# 61 GRAY WITH BLACK EPOXY LETTERING.
  - MAXIMUM DEFLECTION: 2.5" (OPTIONAL) SHOCK SWAY SPACE KEEP OUT ZONES IN ALL 3 ORIENTATIONS.
  - 8" VENTILATION KEEP OUT ZONES ON EITHER SIDE OF CABINET.

**CONNECTOR PIN DESIGNATIONS**

J1 AC INPUT		J2 & J3 OUTPUT 1 & 2	
MS3102R20-4P		MS3102R16-10S	
PIN DESCRIPTION		PIN DESCRIPTION	
A LINE 1		A LINE	
B LINE 2		B NEUTRAL	
C GROUND		C GROUND	
D NOT USED			

DIMENSIONS ARE IN INCHES & [mm].

<p>THIS DRAWING IN DESIGN AND DETAIL IS NOVA ELECTRIC PROPERTY AND MUST NOT BE USED EXCEPT IN CONNECTION WITH OUR WORK. ALL RIGHTS OF DESIGN OR INVENTION ARE RESERVED.</p> <p>TOLERANCES UNLESS OTHERWISE SPECIFIED</p> <p>XX = ± .02</p> <p>XXX = ± .005</p> <p>ANGLE = ± 1/2°</p> <p>WWW.NOVAELECTRIC.COM</p>	<p>THIRD ANGLE PROJECTION</p>	<p>NOVA ELECTRIC</p> <p>A DIV. OF TECHNOLOGY DYNAMICS INC.</p> <p>100 SCHOOL STREET</p> <p>BERGENFIELD, N.J. 07621-2915</p>	
	<p>DRAWN J.U. 12/30/13</p> <p>CHECKED DATE 1/3/14</p> <p>B.T.</p>	<p>DATE 2/11/14</p> <p>APPROVED A.L.</p>	<p>OUTLINE DRAWING,</p> <p>GHSLPFC11-SERIES-700W-1.6KW</p>
	<p>9981078</p>	<p>SIZE</p>	<p>CAGE: 29019 SHEET: 1 of 1</p>
	<p>DO NOT SCALE</p>	<p>REVISIONS</p>	<p>REVISIONS</p>