

8 7 6 5 4 3 2 1

D

C

B

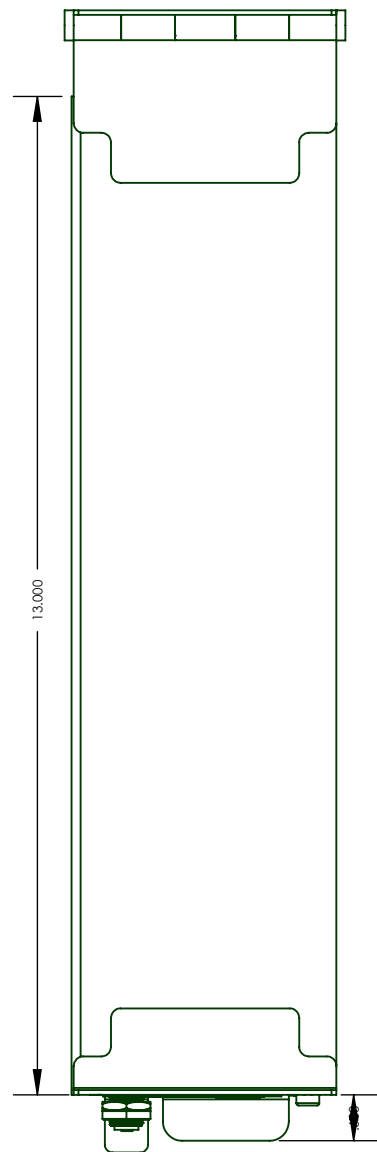
A

D

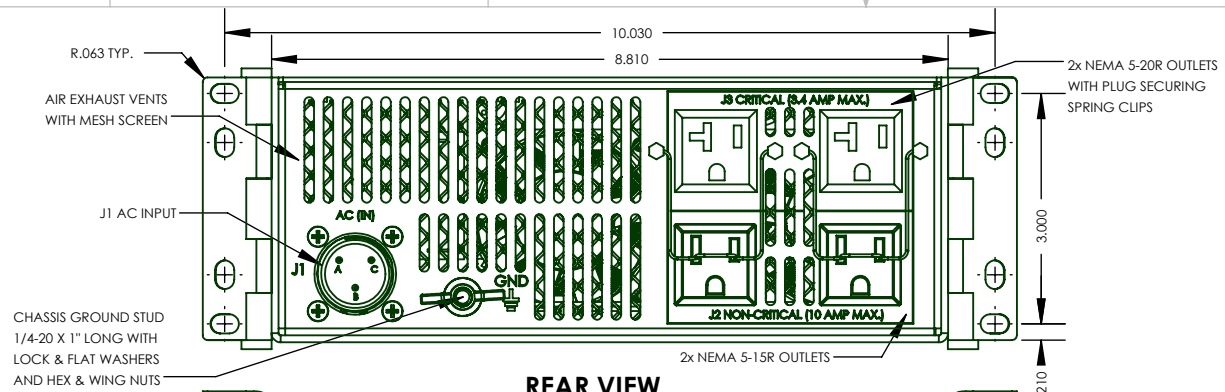
C

B

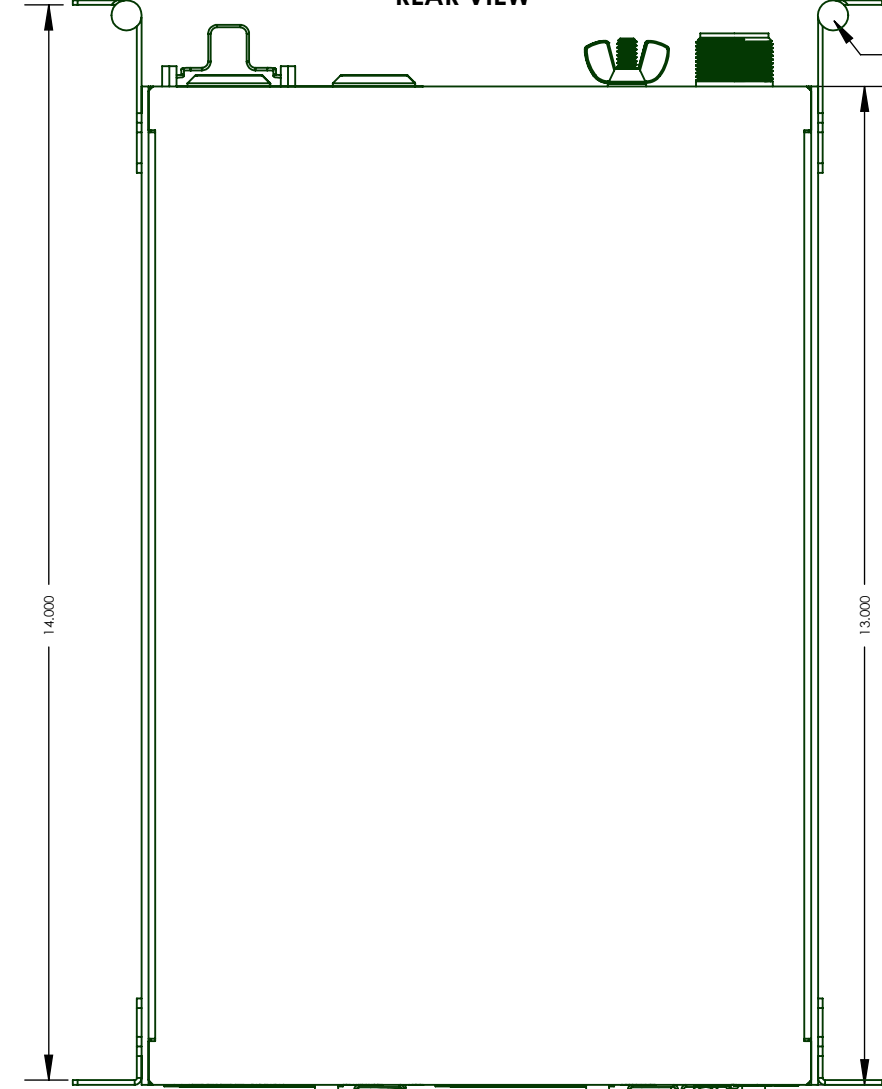
A



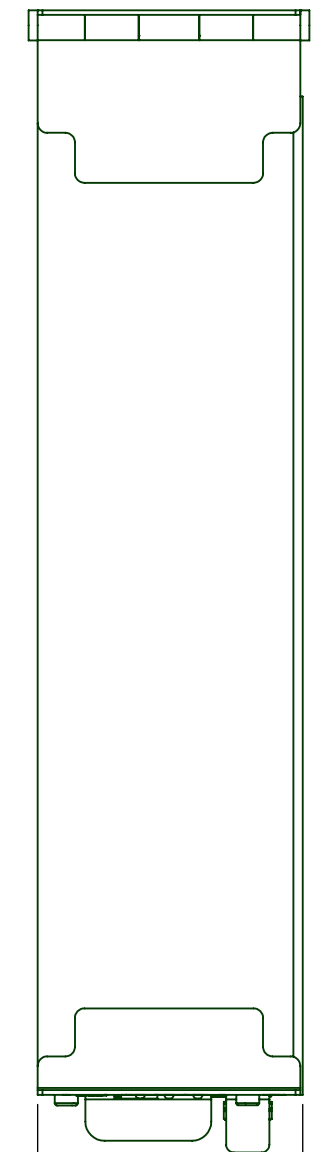
LEFT VIEW



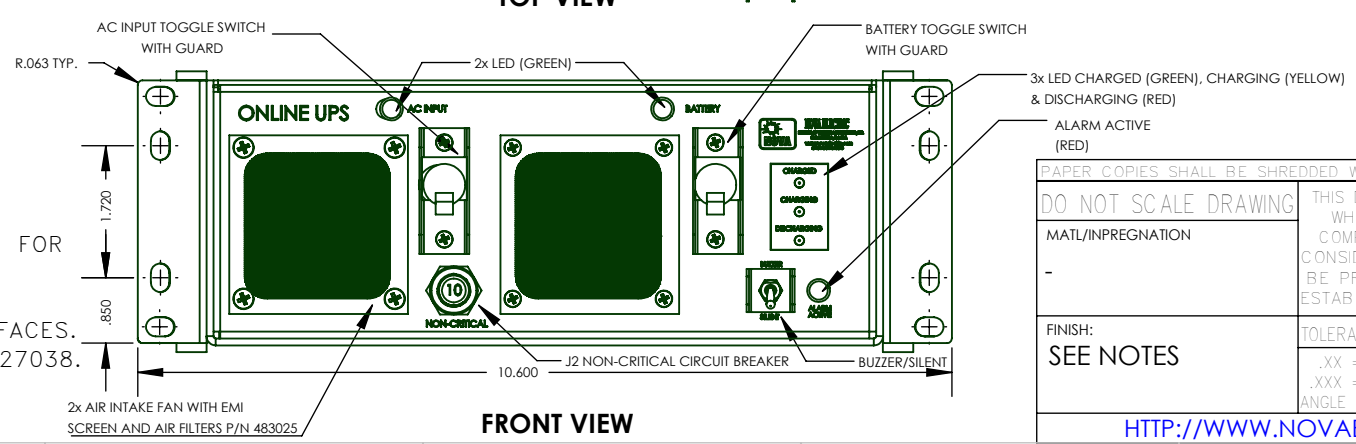
REAR VIEW



TOP VIEW



RIGHT VIEW



FRONT VIEW

CONNECTOR PIN DESIGNATIONS

J1 AC INPUT

MS3102E16-10P	
TERM	DESCRIPTION
A	LINE
B	NEUTRAL
C	GROUND

- NOTES:
1. ALL DIMENSIONS ARE IN INCHES.
 2. ALL UNDIMENSIONED PICTORIAL CONFIGURATIONS ARE FOR REFERENCE ONLY.
 3. FRONT AND REAR MARKING FOR REFERENCE ONLY.
 4. FINISH: YELLOW IRRIDITE, THEN PRIME & PAINT SURFACES. COLOR: BLACK POWDER COATING, FED-STD 595 #27038.
 5. SILK-SCREENED IN WHITE EPOXY INK.
 6. APPROXIMATE WEIGHT: 14.0 LBS.

PAPER COPIES SHALL BE SHREDDED WHEN NO LONGER REQUIRED. ELECTRONIC COPIES SHALL NOT BE DISCLOSED OUTSIDE OF THE INTENDED RECIPIENTS.

DO NOT SCALE DRAWING		THIRD ANGLE PROJECTION	
MATERIAL/IMPREGNATION		NOVA ELECTRIC A DIV. OF TECHNOLOGY DYNAMICS INC. 100 SCHOOL STREET BERGENFIELD, N.J. 07621-2915	
FINISH: SEE NOTES		DRAWN DATE S.G. 5/28/19 CHECKED DATE S.G. 5/28/19 APPROVED DATE A.L. 5/28/19	OUTLINE DRAWING, GRSLPFC11-5060-120-120-HR2U B 9812519 CAGE: 29019 SHEET: 1 PAGE 1
TOLERANCES UNLESS OTHERWISE SPECIFIED .XX = ± .02 .XXX = ± .005 ANGLE = ± 1/2°		DIMENSIONS IN INCHES UNLESS OTHERWISE NOTED	SCALE: 1:2.5 SIZE: C REV.

[HTTP://WWW.NOVAELECTRIC.COM](http://www.novaelectric.com)

8 7 6 5 4 3 2 1

REV C 9812519-C-SW-MAIN ASSEMBLY