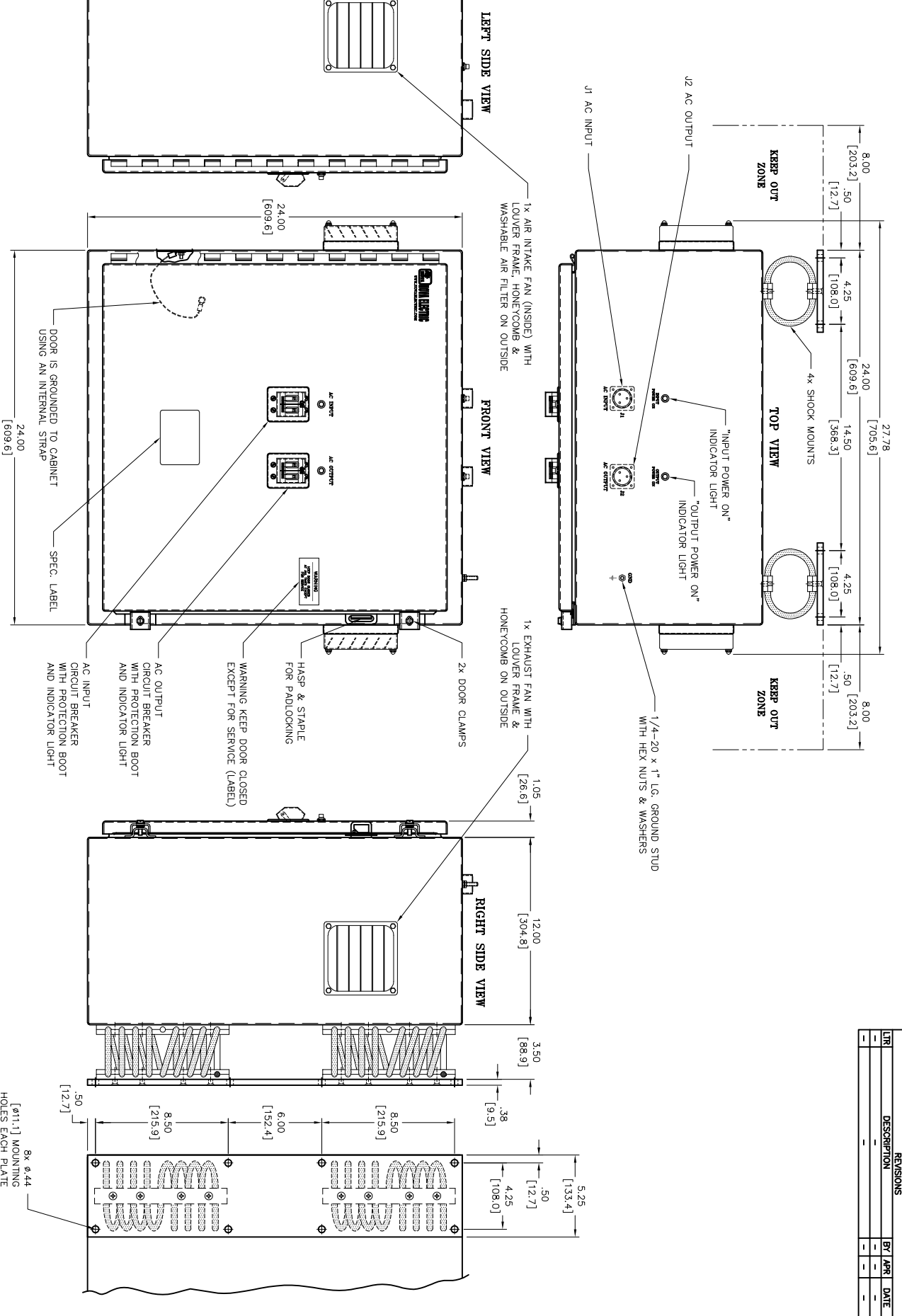


REVISONS		BY	APR	DATE
1				
2				



**NOTES:**

1. ALL DIMENSIONS ARE IN INCHES, & MILLIMETERS [mm].
2. ALL UNDIMENSIONED PICTORIAL CONFIGURATIONS ARE FOR REFERENCE ONLY.
3. FRONT AND TOP MARKINGS FOR REFERENCE ONLY.
4. NOMINAL CABINET DIMENSIONS: 24" HIGH x 24" WIDE x 12" DEEP.
5. ENCLOSURE PAINTED ANSIP# 61 GRAY WITH BLACK EPOXY LETTERING.
6. MAXIMUM DEFLECTION: 2.5" (OPTIONAL) SHOCK SWAY SPACE
7. 8" VENTILATION KEEP OUT ZONES ON EITHER SIDE OF CABINET.

**CONNECTOR PIN DESIGNATIONS**

J1 AC INPUT			J2 AC OUTPUT		
PIN	DESCRIPTION	LINE	PIN	DESCRIPTION	LINE
A	NEUTRAL	B	A	NEUTRAL	B
B	GROUND	C	B	NEUTRAL	C
C	GROUND		C	GROUND	

PAPER COPIES SHALL BE SHREDED WHEN NO LONGER REQUIRED. ELECTRONIC COPIES SHALL NOT BE DISCLOSED OUTSIDE OF THE INTENDED RECIPIENTS.

THIS DOCUMENT CONTAINS INFORMATION WHICH IS CONFIDENTIAL, MAY BE REPRODUCED OR TRANSMITTED IN ANY FORM OR BY ANY MEANS, WITHOUT PERMISSION IN WRITING BE PROTECTED IN ACCORDANCE WITH ESTABLISHED PROCEDURES & POLICIES. TOLERANCES UNLESS OTHERWISE SPECIFIED ARE: .XX" = ± .02" DIMENSIONS IN INCHES .XXX" = ± .012" UNLESS OTHERWISE NOTED

NOVA ELECTRIC  
A DIV. OF TECHNOLOGY DRIVING, INC.  
100 SCHOOL STREET  
BROOKFIELD, N.J. 07021-2915  
TEL: 908.401.1000  
FAX: 908.401.1002  
WWW.NOVAELECTRIC.COM

DATE: 10/29/19  
DRAWN BY: [Signature]  
CHECKED BY: [Signature]  
APPROVED BY: [Signature]  
DATE: 10/29/19

OUTLINE DRAWING  
GH-CFC-SERIES-700W-4KW  
9981110

DO NOT SCALE SIZE CAGE: 29019 SHEET 1 of 1 REV. 1