



NOVA ELECTRIC



TYPICAL APPLICATIONS

- Communication Equipment
- Network Servers
- Computers
- Workstations
- Wireless Communications
- Other Electronic Pheripherals

POPULAR OPTIONS

- Ruggedization Against High Shock, Vibration and Humidity
- Chassis Slide Guides
- Additional Run Time Via External Batteries
- SNMP Communications
- DB9 Dry Relay Contacts
- External 500W Battery Pack Charger
- Power Distribution Units (PDUs)
- Environmental Stress Screening Services

CONTACT

100 School Street,
Bergenfield, NJ 07621 USA

(201) 385-0500

novaelectric.com
info@novaelectric.com



AET Series

1.5 – 3.2 KVA Single Phase Output True Online COTS UPS



Vertical Freestanding Mount Included



19" Rack Mount Kit Included

The Leader In Rugged Power Conversion Technology Since 1966

Rev B-November-19-2024



NOVA ELECTRIC



TYPICAL APPLICATIONS

- Communication Equipment
- Network Servers
- Computers
- Workstations
- Wireless Communications
- Other Electronic Pheripherals

POPULAR OPTIONS

- Ruggedization Against High Shock, Vibration and Humidity
- Chassis Slide Guides
- Additional Run Time Via External Batteries
- SNMP Communications
- DB9 Dry Relay Contacts
- External 500W Battery Pack Charger
- Power Distribution Units (PDUs)
- Environmental Stress Screening Services

CONTACT

100 School Street,
Bergenfield, NJ 07621 USA

(201) 385-0500

novaelectric.com
info@novaelectric.com



FEATURES AND BENEFITS

Flexible Mounting Orientation

Allows system integrators more flexibility in designing their backup power system to maximize space. With the rotatable LCD design, the user can mount the UPS vertically or horizontally. 19" Rack Mount adapters are included with each unit.

User-Friendly Graphic LCD

This robust LCD display enables field service engineers to easily troubleshoot the UPS without opening the box thus reducing downtime.

Single Voltage Battery Pack Design

A 48 VDC standard battery pack design comprised of 4 x 12V7AH is used in all AET series UPS models and are interchangeable with each other. Additional battery drawers can be added to increase battery runtime.

Hot-Swappable Battery

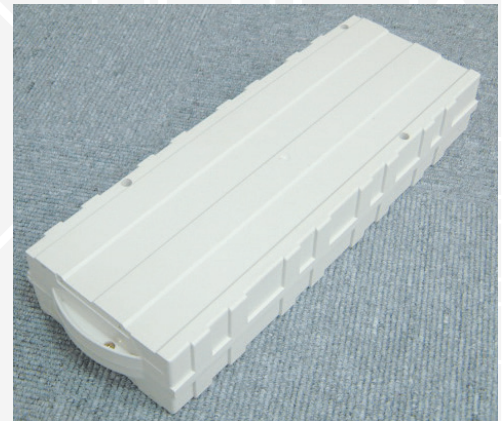
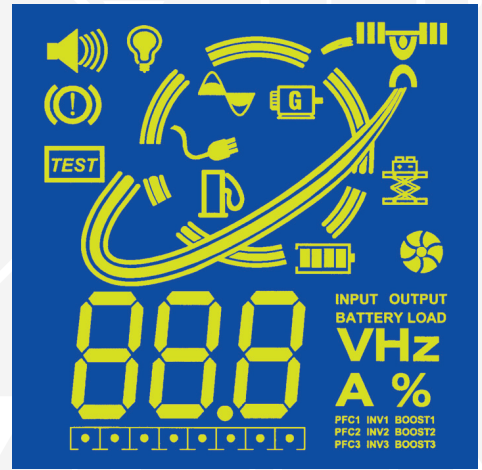
The standard 48 VDC battery pack allows installers to take the headache out of battery installation. Installers can now simply slide the used battery pack out of the unit and replace it with a new pack. All AET battery packs are interchangeable reducing the risk of system failures.

Light Weight Design

The AET Model is specially designed for field installation. The light weight design requires only a single installer to put the system in place. This will significantly reduce on-the-job injuries and installation fees.

User-Remote Interface

The off-site user can now test, set parameters, monitor power status, save files, and shutdown the system all via the remote interface. The user-remote interface includes SNMP/HTTP Card, RS232, USB, DB9, and AS400 interface.



The Leader In Rugged Power Conversion Technology Since 1966



NOVA ELECTRIC



TYPICAL APPLICATIONS

- Communication Equipment
- Network Servers
- Computers
- Workstations
- Wireless Communications
- Other Electronic Pheripherals

POPULAR OPTIONS

- Ruggedization Against High Shock, Vibration and Humidity
- Chassis Slide Guides
- Additional Run Time Via External Batteries
- SNMP Communications
- DB9 Dry Relay Contacts
- External 500W Battery Pack Charger
- Power Distribution Units (PDUs)
- Environmental Stress Screening Services

CONTACT

100 School Street,
Bergenfield, NJ 07621 USA

(201) 385-0500

novaelectric.com
info@novaelectric.com



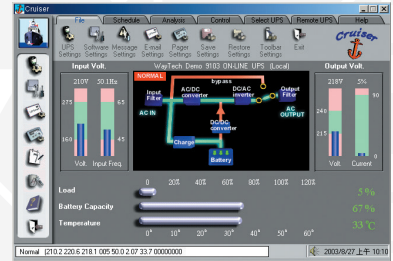
INTELLIGENT POWER MANAGEMENT SOFTWARE

Cruiser Softward (Included)

Users are able to customize the various Cruiser controls such as warning method, alarm messages and several shortcut icons to easily access the most commonly used functions. The Cruiser software can send warning messages to a pager, via e-mail or over the LAN, thus providing an early warning system for power failures, system shutdown and variety of other scenarios. It guarantees a faster response time, even when you are not in the office.

Cruiser Software Features:

- Green Mode Supported
- PFC Status Display
- Cross Platform Supported
- UPS Monitoring Utility
- Scheduled System Shutdown
- Graphic Display of UPS Status
- Warning Notification via E-mail or Pager
- Customized Controls
- User Definable Warnings
- Multi-Language Versions
- "Read & Write" Functions when Setting Output Voltage & Frequency (*Optional*)



INTERFACE & OS COMPATIBILITIES

RS 232 (Standard)

Windows: Win95, WinNT4.0, Win98SE, Win2000, WinMe, WinXP
Linux: 7.0 ~ 7.3, 8.0 ~ 8.4, 9.0
Mandrake: 8.2, 8.3, 8.4, 9.0
Novell: 4.x, 5.1

USB (Optional Card)

Windows: Win 98SE, Win2000, WinME, WinXP

OTHER MAJOR UPS MONITORING SOFTWARE AND SNMP / HTTP CARDS COMPATIBLE WITH ALL AET SERIES UPS

(For more information please contact novasales@novaelectric.com)

- Internal or External Networking Card: Net Agent II or USHA PRO (SNMP,HTTP, PPP,TCP/IP, etc)
- UPSilon via RS232
- RUPS via Contact Closure (DB9)



NOVA ELECTRIC



TYPICAL APPLICATIONS

- Communication Equipment
- Network Servers
- Computers
- Workstations
- Wireless Communications
- Other Electronic Pheripherals

POPULAR OPTIONS

- Ruggedization Against High Shock, Vibration and Humidity
- Chassis Slide Guides
- Additional Run Time Via External Batteries
- SNMP Communications
- DB9 Dry Relay Contacts
- External 500W Battery Pack Charger
- Power Distribution Units (PDUs)
- Environmental Stress Screening Services

CONTACT

100 School Street,
Bergenfield, NJ 07621 USA

(201) 385-0500

novaelectric.com
info@novaelectric.com



Typical AET 11-3K Connections



Typical AET 11-2.2K Connections



Typical AET 11-1.5K Connections

The Leader In Rugged Power Conversion Technology Since 1966

SPECIFICATIONS

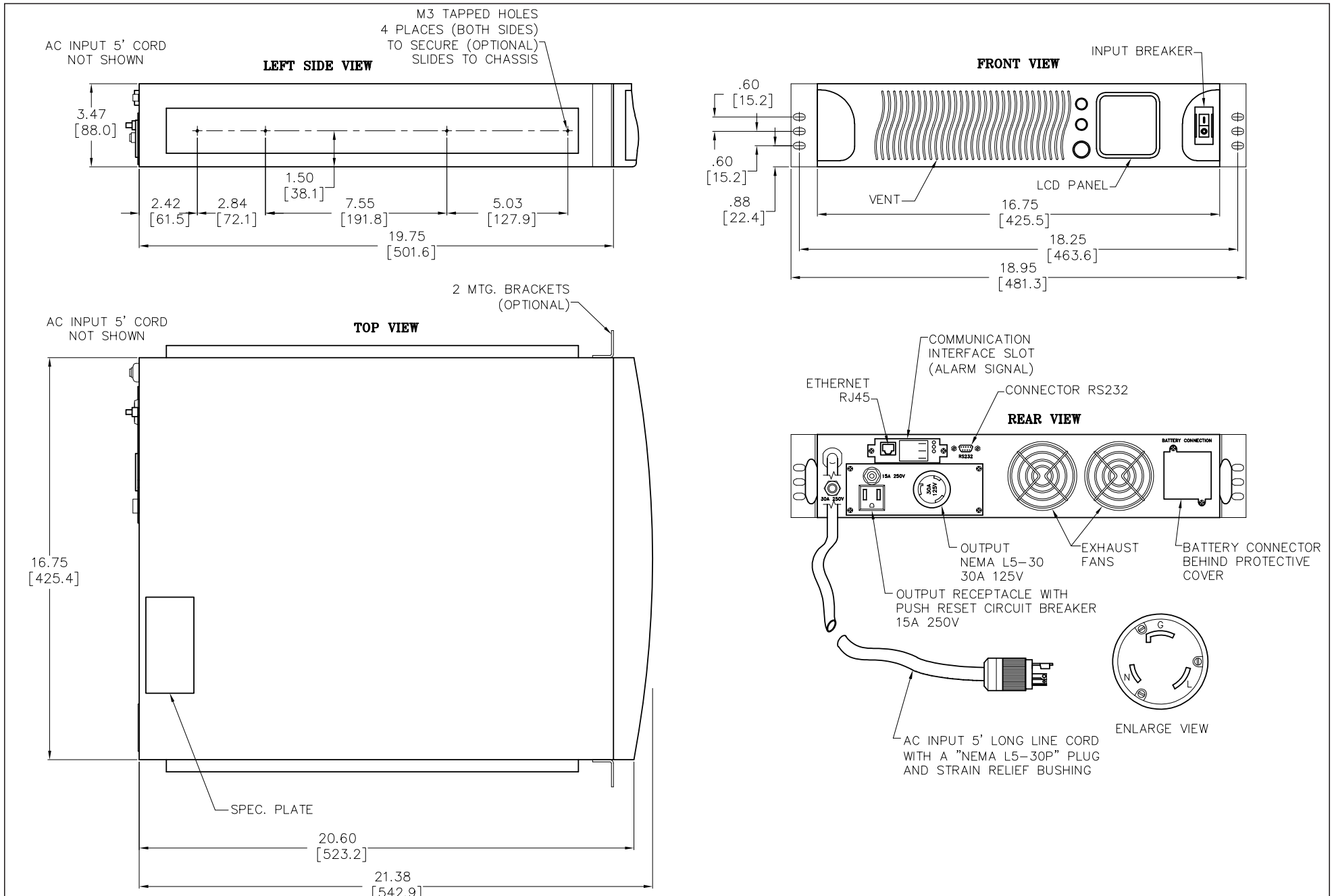
PARTIAL MODEL NAME	AET11-1.5K	AET-11-1.6K	AET11-2.2K	AET 11-2.5K	AET11-3K	AET11-3.2K
TOPOLOGY	True On-Line, Double Conversion					
ON-BATTERY OUTPUT WAVEFORM	Pure Sine Wave					
NUMBER OF PHASE	Single (1Phase 2W + G)					
INPUT						
MAXIMUM CAPACITY (VA / W)	1500 VA/1050 W	1600 VA/1120 W	2200 VA/1540 W	2500 VA/1750 W	3000 VA/2100 W	3200 VA/2240 W
NOMINAL INPUT VOLTAGE	120 VAC	230 VAC	120 VAC	230 VAC	120 VAC	230 VAC
INPUT VOLTAGE RANGE	80 to 138 VAC	160-276 VAC	80 to 138 VAC	160-276 VAC	80 to 138 VAC	160-276 VAC
NOMINAL INPUT FREQUENCY	50 / 60 Hz +/- 5 Hz					
INPUT PFC	> 0.98 @ Full Load					
INPUT SHORT PROTECTION	Circuit Breaker on Front of the UPS					
OUTPUT						
NOMINAL OUTPUT VOLTAGE	100/110/115/120VAC	208/220/230/240 VAC	100/110/115/120VAC	208/220/230/240 VAC	100/110/115/120 VAC	208/220/230/240 VAC
OUTPUT VOLTAGE REGULATION	Rated Voltage + / - 2%					
OUTPUT THD	< 3 % @ Linear Load					
HIGH EFFICIENCY MODE (AC TO AC)	> 86%		> 88 %		> 88%	
CREST FACTOR	3 :1					
START ON BATTERY	Yes					
OUTPUT FREQUENCY	50 / 60 Hz (Autotracking)					
OVERLOAD CAPABILITY	At least 120 seconds at 101-110% load, 111-150% max 12 seconds. Immediate shutdown and transfer of load to bypass at 150% load. Auto transfer back to UPS when overload is removed.					
BATTERY						
USER REPLACEABLE BATTERY	1 x 48 VDC Battery Pack		96V (2 x 48VDC) Battery Pack		96V (2 x 48VDC) Battery Pack	
TYPICAL BACKUP TIME (FULL/HALF LOAD)	6 / 17 Minutes		9 / 26 Minutes		6 / 17 Minutes	
BATTERY TYPE	Sealed VRLA 12V7AH ; Hot Swap					
RECHARGE TIME TO 90%	8 hours					
EXTENDED BATTERY DRAWERS	Additional Battery Module in 2U High (Comprises 2 x 48 VDC Battery Packs) Model AETPC					
OPERATION	Transition from or to battery operation is accomplished with no interruption of power to the load. Upon restoration of input power, the UPS will automatically resume normal operation and recharge the battery					
ADVANCE WARNING DIAGNOSTICS						
FRONT PANEL INDICATION	Front Panel Menu Driven LCD Monitoring and Control Panel for all Functions					
AUDIBLE ALARMS	DC Mode, Low Battery, voltage / Frequency Error, Charger Fail, Over Load, Fault, PFC Overload					
COMMUNICATION INTERFACE						
COMMUNICATION PORT	RS - 232 Port (Standard); DB9, AS400, USB Cards (Optional)					
SNMP MANAGEABLE	Yes (Optional)					
ENVIRONMENTAL						
TEMPERATURE (OPERATION / STORAGE)	0° C to + 40° C / -15 to + 50° C					
RELATIVE HUMIDITY	0 % to 95 % Non-Condensing					
ALTITUDE	Up to 10,000 ft (3,000 Meters) at up to 40° C, without Derating					
AUDIBLE NOISE	< 45 dBA @ 1 Meter					
MECHANICAL						
DIMENSIONS - (W x H x D) NOTE: CHANGE W TO 19 IN. FOR RACK MOUNT CONFIGURATION	16.77 x 3.46 (2U) x 19.7 (in) 426 x 88(2U) x 500 (mm)		16.67 x 6.93(4U) x 19.7 (in) 426 x 176 (4U) x 500 (mm)		16.67 x 6.93 (4U) x 19.7 (in) 426 x 176 (4U) x 500 (mm)	
WEIGHT (UPS / BATTERY PACKS)	26.4 / 24.6 lb 12 / 11.2 Kgs		29 / 68.7 lb 13.2 / 31.2 Kgs		29.5 / 69 lb 13.4 / 31.4 Kgs	
TOTAL WEIGHT	51 lb 23.2 Kgs		97.7 lb 44.4 Kgs		98.5 lb 44.6 Kgs	
CONFORMANCE						
EMI / RFI COMPATIBILITY	FCC Part 15 Class B (1.5KVA, 2.2KVA, 3KVA Models) EN50091-2 Class B, EN55022B, IEC/EN61000-3-2 (Harmonic Current) (1.6KVA, 2.5KVA, 3.2KVA Models)					
SAFETY	UL, cUL (CSA) (1.5KVA, 2.2KVA, 3KVA Models) CE, TUV, GS (1.6KVA, 2.5KVA, 3.2KVA Models)					



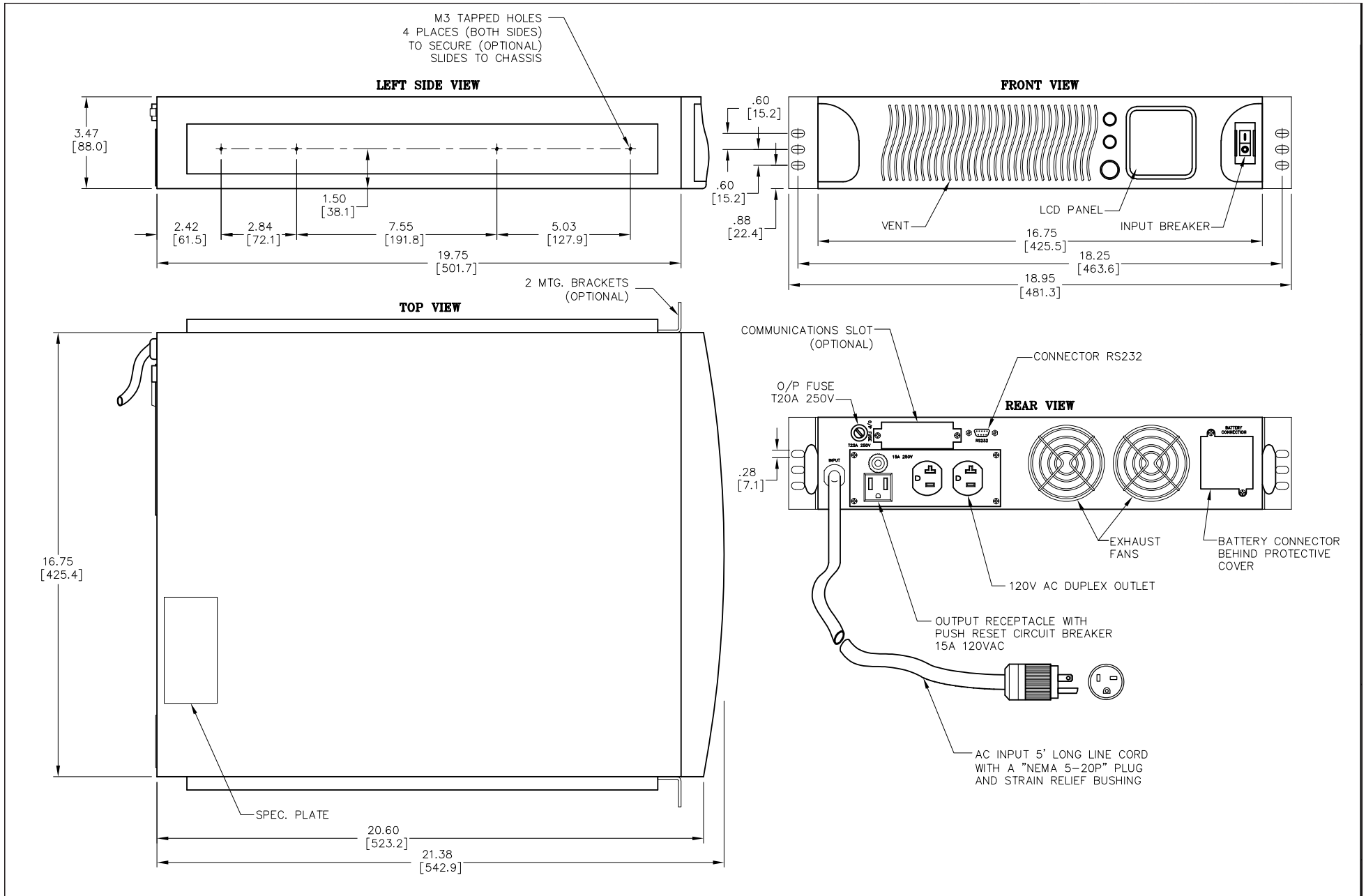
The Leader In Rugged Power Conversion Technology Since 1966



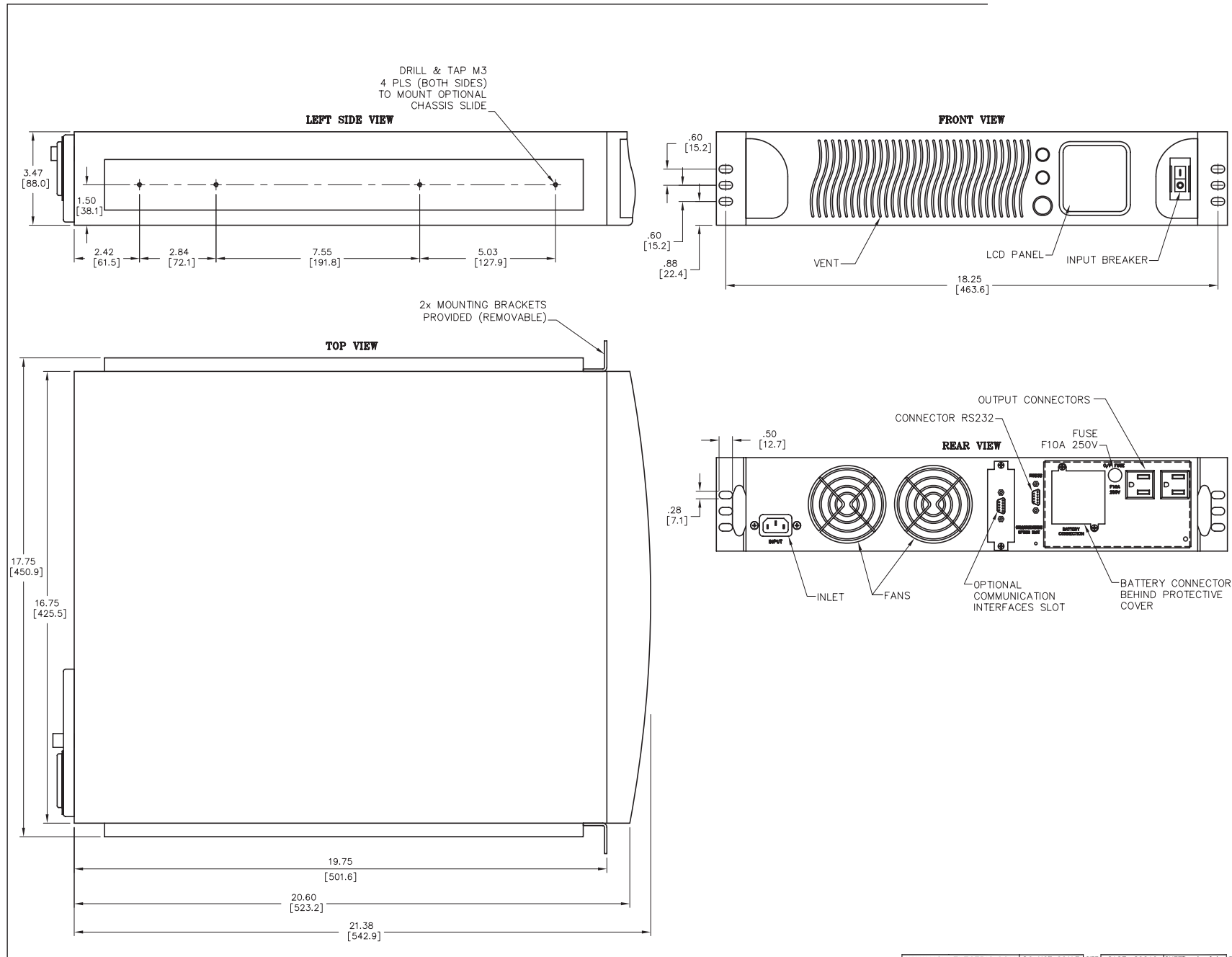
TYPICAL AET 11-3K MODEL OUTLINE DRAWING



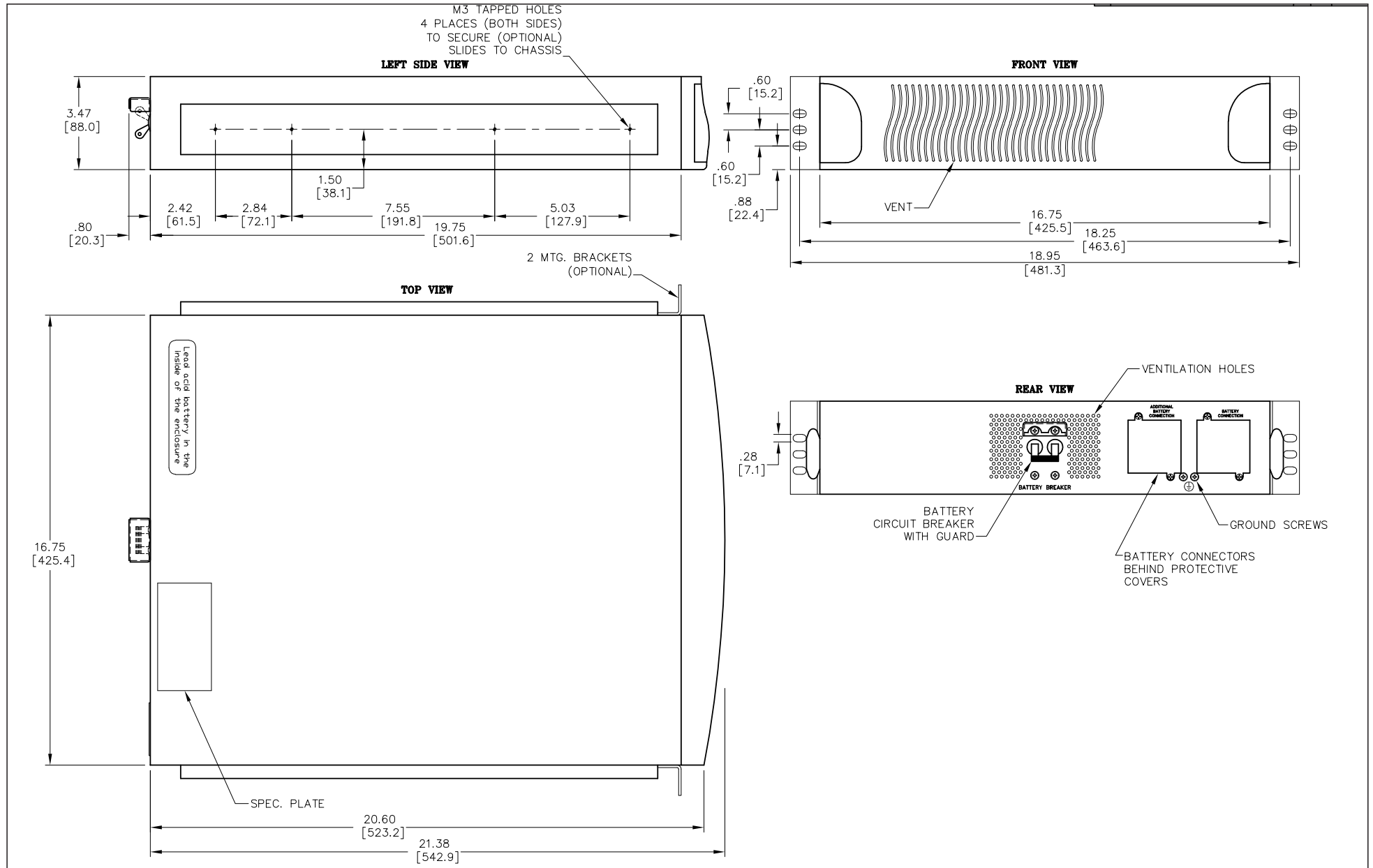
TYPICAL AET 11-2.2K MODEL OUTLINE DRAWING



TYPICAL AET 11-1.5K MODEL OUTLINE DRAWING



TYPICAL AETPC EXTERNAL BATTERY PACK OUTLINE DRAWING





RUGGED AC POWER SYSTEMS



SELECT UNITS QUALIFIED TO MIL-STD-810, MIL-S-901, MIL-STD-1399, MIL-STD-461, MIL-STD-167, MIL-STD-740, RTCA/DO-160, AND MORE

RUGGED TRUE ONLINE UPS



500 W – 500+ KW

Rack Mount, Bulkhead Mount, and Freestanding

Single and Three Phase

50, 60, and 400 Hz.

PURE SINEWAVE DC-AC INVERTERS



100 W – 500+ KW

Rack Mount, Bulkhead Mount, and Freestanding

Single and Three Phase

50, 60, and 400 Hz.

SOLID-STATE FREQUENCY CONVERTERS



100 W – 500+ KW

Rack Mount, Bulkhead Mount, and Freestanding

Single and Three Phase

50, 60, and 400 Hz.

POWER DISTRIBUTION UNITS (PDUs)



Basic, Switched, Auto-Transfer Switching, and Metered Configurations

Rack Mount, Bulkhead Mount, and Freestanding

Single and Three Phase

CUSTOM EMI FILTERS



For MIL-STD-461 Compliance

Rack Mount, Bulkhead Mount, and Freestanding

Single and Three Phase

RUGGED PORTABLE TRANSFORMERS



100 W – 500+ KW

Rack Mount, Bulkhead Mount, and Freestanding

Single and Three Phase

EXTERNAL MAINTENANCE BYPASS SWITCHES (MBSs)



Rack Mount, Bulkhead Mount, and Freestanding

Single and Three Phase

CUSTOM DESIGNS



Designed & Built to Spec

Integrated AC & DC Capabilities

Multiple Outputs

RELIABLE AC POWER WHEN AND WHERE YOU NEED IT SEVERE ENVIRONMENT PRODUCTS



- AIRBORNE
- SHIPBOARD
- MOBILE
- RACK MOUNT & FREESTANDING
- 50, 60, AND 400 Hz
- AIR & WATER COOLED
- SINGLE AND THREE PHASE
- LIGHTWEIGHT DESIGNS