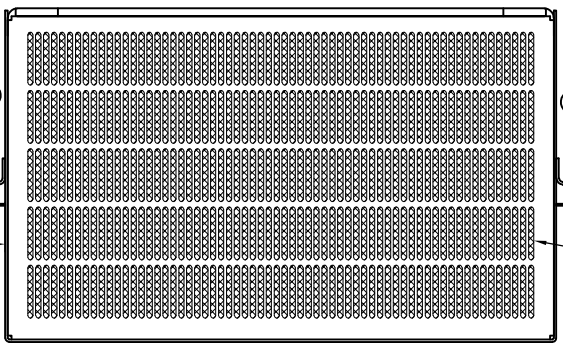


| REVISIONS | | REV | DATE |
|-----------|--|-----|------|
| 1 | | | |
| 2 | | | |

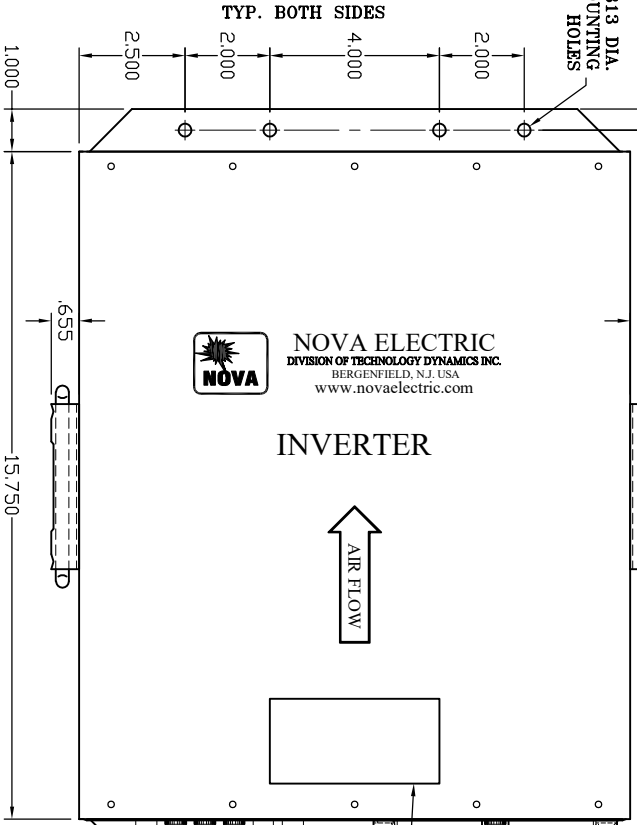
REAR VIEW



AIR EXHAUST VENTS WITH MESH SCREEN

8x .313 DIA. MOUNTING HOLES

TOP VIEW



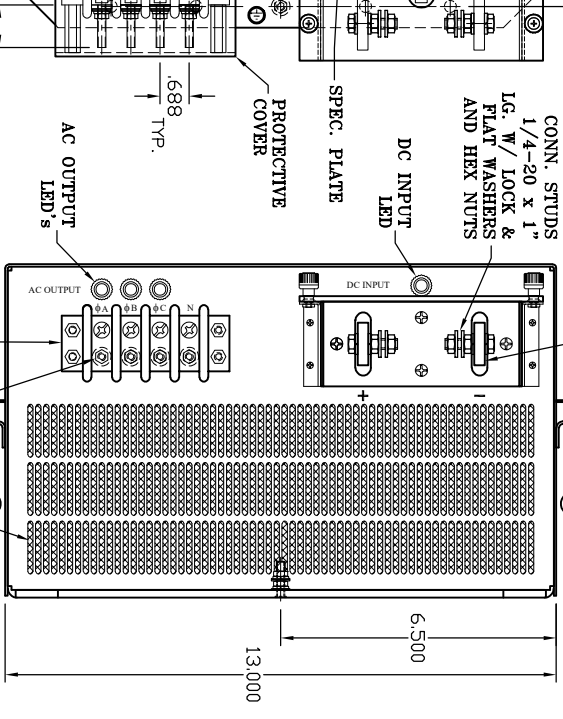
NOVA ELECTRIC
DIVISION OF TECHNOLOGY DYNAMICS INC.
BERGENFIELD, N.J. USA
www.novaelectric.com

INVERTER

AIR FLOW

DC INPUT BUS BAR .25" THK. x 1" W WITH PROTECTIVE COVER "SEE BUS BAR DETAIL"

FRONT VIEW



DC INPUT CONN. STUDS 1/4-20 x 1" LG. W/ LOCK & FLAT WASHERS AND HEX NUTS

DC INPUT LED

SPEC. PLATE

PROTECTIVE COVER

AC OUTPUT LED'S

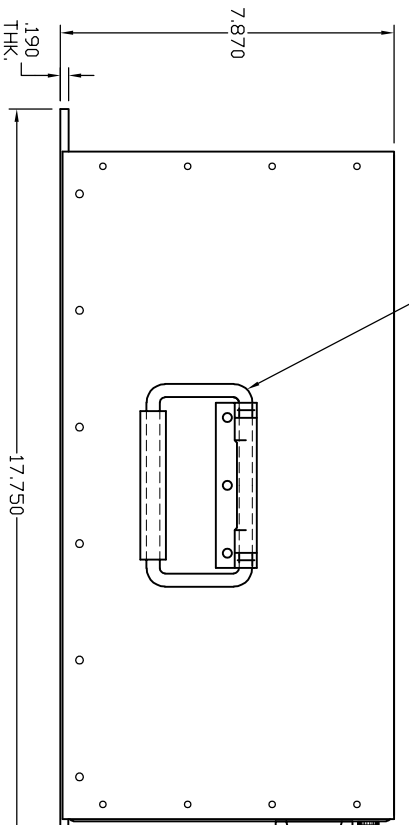
AC OUTPUT TERMINAL BLOCK WITH PROTECTIVE COVER (NOT SHOWN)

4x STUD #10-32, CONNECTION STUD

AIR INTAKE VENTS WITH MESH SCREEN

HANDLE BOTH SIDES (OPTIONAL)

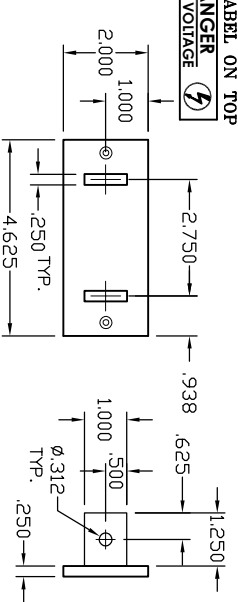
LEFT SIDE VIEW



NOTES:

1. ALL DIMENSIONS ARE IN INCHES.
2. ALL UN-DIMENSIONED PICTORIAL CONFIGURATIONS ARE FOR REFERENCE ONLY.
3. FRONT AND REAR MARKING FOR REFERENCE ONLY. BASE = 0.190" THICK.
4. ALL ALUMINUM PARTS ARE 5052-H32.
5. FINISH: CLEAR IRRIDATED, THEN PRIME & PAINT ALL SURFACES AND ALL EDGES - ANSI #61 GRAY SEMI-GLOSS.
6. SILK-SCREENED IN BLACK EPOXY INK.
7. UNIT WEIGHT: 33.7 LBS.

DC INPUT BUS BAR DETAIL



AC OUTPUT PROTECTIVE COVER WITH THIS LABEL ON TOP

DANGER HIGH VOLTAGE

#10-32 x .75" LING. GROUND STUD WITH 2x HEX NUTS, 3x FLAT & 2x LOCK WASHERS

THIS DOCUMENT CONTAINS INFORMATION WHICH IS CONFIDENTIAL, AND BE CONSIDERED AS SUCH. IT IS TO BE PROTECTED IN ACCORDANCE WITH ESTABLISHED PROCEDURES & POLICIES. TOLERANCES UNLESS OTHERWISE SPECIFIED: .XX" = ±.02, DIMENSIONS IN INCHES UNLESS OTHERWISE NOTED.

NOVA ELECTRIC
A DIV. OF TECHNOLOGY DYNAMICS, INC.
100 SCHOOL STREET
BERGENFIELD, N.J. 07621-2915
OUTLINE DRAWING
NGLM - SERIES

APPROVED DATE: 7/8/20
M.L. 7/8/20
C 9981120

DO NOT SCALE SIZE: CAGE: 29019 SHEET: 1 of 1 REV.