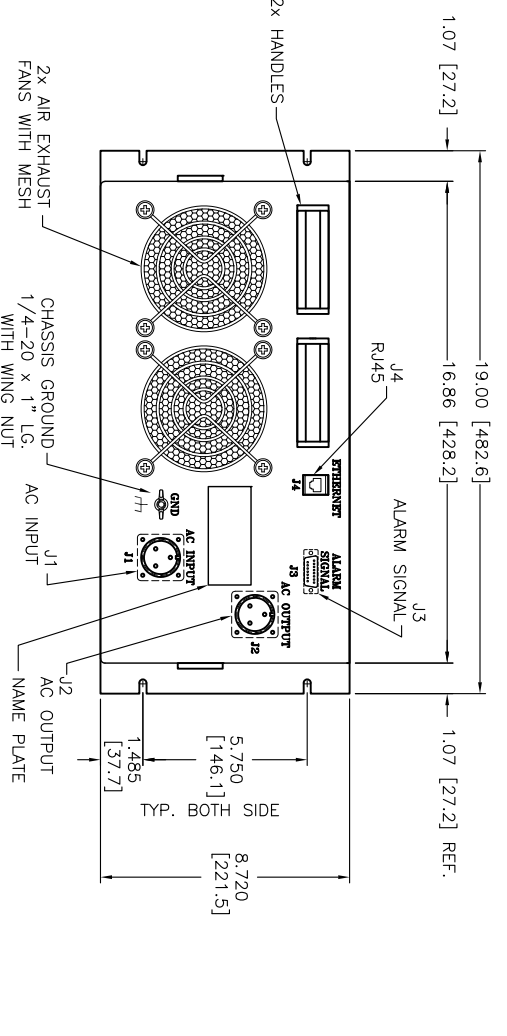
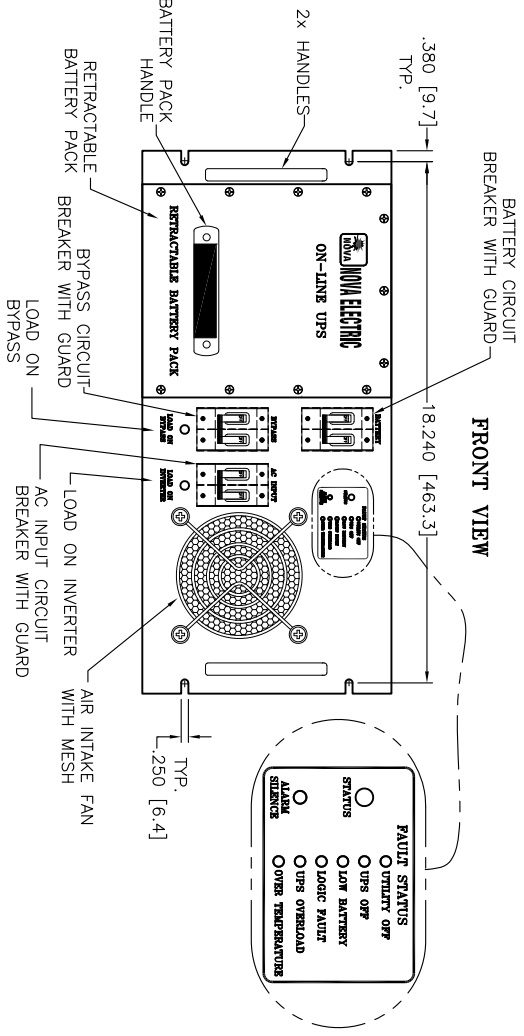
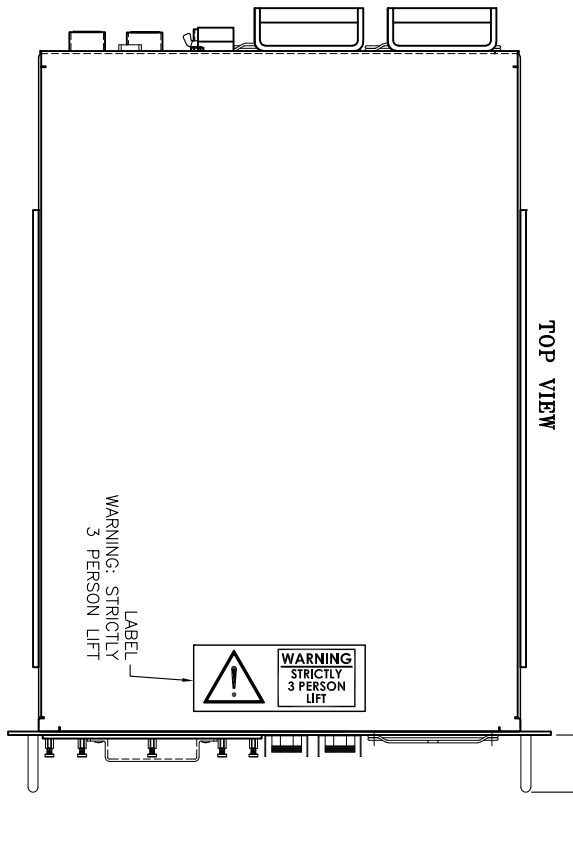
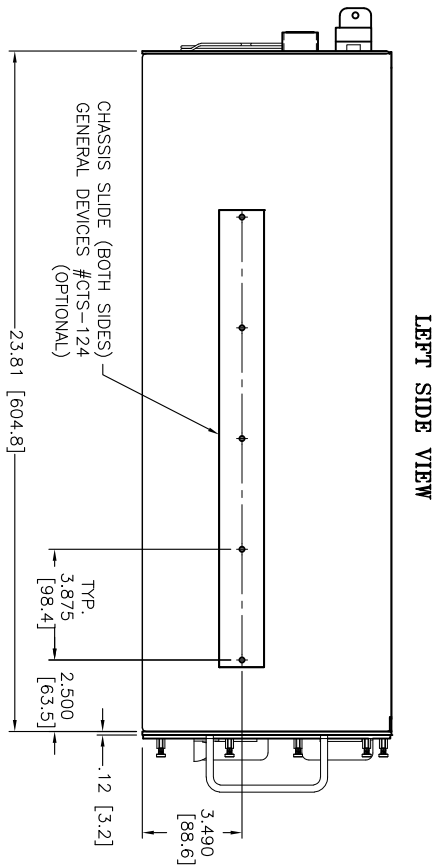


REVISIONS		BY	DATE
1	DESCRIPTION	BT	9/28/11
A	UPDATED	JC	9/28/21



- NOTES:
1. ALL DIMENSIONS ARE IN INCHES [MM].
  2. ALL UNDIMENSIONED PICTORIAL CONFIGURATIONS ARE FOR REFERENCE ONLY.
  3. FRONT AND REAR MARKING FOR REFERENCE ONLY.
  4. FRONT PANEL FINISH: IRRIDITE, THEN PRIME & PAINT FRONT SURFACE AND ALL EDGES - ANSI #61 GRAY SEMI-GLOSS. ALL OTHER SURFACES ARE IRRIDITED (ALUMINUM).
  5. FRONT AND REAR PANEL SILKSCREEN IN BLACK EPOXY INK.
  6. CAD-FREE CONNECTORS OPTIONAL.
  7. IP PROTECTION (OPTIONAL).
  8. APPROXIMATE WEIGHT: 110 LBS. (75 LBS. WITH LITHIUM BATTERIES)

J1 AC INPUT		J2 AC OUTPUT	
MATE: MS3102R20-19P	MS3102R20-19S	MATE: MS3102R20-19P	MS3102R20-19S
PIN DESCRIPTION	PIN DESCRIPTION	PIN DESCRIPTION	PIN DESCRIPTION
A LINE	A LINE	A LINE	A LINE
B NEUTRAL	B NEUTRAL	B NEUTRAL	B NEUTRAL
C GND	C GND	C GND	C GND

J3 ALARM SIGNAL	
PIN	DESCRIPTION
1 & 2	SPARE
3 & 4	SPARE
5 & 6	BATT LOW
7 & 8	OVERLOAD
9 & 10	SPARE
11 & 12	SPARE
13,14,15	SPARE

J4 ETHERNET	
PIN	DESCRIPTION
R45	ACCORDANCE WITH THE 100Base-TX Signal Pin Out

DO NOT SCALE DRAWING		THIRD ANGLE PROJECTION	
MATERIAL:	-	DRAWN DATE:	09/28/11
FINISH:	-	CHECKED DATE:	09/28/11
THIS DRAWING IN DESIGN AND DETAIL IS NOVA ELECTRIC PROPERTY AND MUST NOT BE USED EXCEPT IN CONNECTION WITH OUR WORK. ALL RIGHTS OF DESIGN OR INVENTION ARE RESERVED. TOLERANCES UNLESS OTHERWISE SPECIFIED: XX = ± .02 DIMENSIONS IN INCHES XXX = ± .005 UNLESS OTHERWISE NOTED ANGLE = ± 1/2° UNLESS OTHERWISE NOTED		APPROVED DATE:	09/28/11
NOVA ELECTRIC A DIV. OF TECHNOLOGY DYNAMICS INC. 100 SCHOOL STREET BERGENFIELD, N.J. 07621-2915		SCALE:	NONE
OUTLINE DRAWING, GRSLPFC-SERIES-SU CHASSIS		SIZE:	C
9981045		SHEET:	1 of 1
REV. A		REV. A	REV. A

HTTP://WWW.NOVAELECTRIC.COM